



Quick reference guide: Installation instructions for the IBAN tool





General note

The information in this document corresponds to the latest state of development. SIX Interbank Clearing Ltd reserves the right to modify this document as needed at any time without prior notification.

All rights are reserved for this document, including photomechanical reproduction, the saving in electronic media and translations into foreign languages.

The manual has been painstakingly created, however errors and discrepancies cannot be completely ruled out. Swiss Interbank Clearing Ltd cannot assume legal responsibility or liability of any sort for errors and the consequences thereof.

If you discover errors in this document or if you have improvement suggestions, then we would be grateful if you would report these to SIX Interbank Clearing:

per e-mail to **support.sic@six-group.com** or per phone to **+41 58 399 4420**.

Introduction

Using the IBAN tool, customary account numbers of the participating financial institutions can be converted into the IBAN format (IBAN = **I**nternational **B**ank **A**ccount **N**umber). It functions as a tool for the updating of account numbers saved in the master data. This enhances data quality and accelerates payment traffic.

The IBAN tool comes in both a **Java** and a **Windows version**. Both versions, along with the corresponding documentation, are available for downloading at www.iban.ch.

Tips for usage

- For the conversion of individual account numbers the use of the online IBAN query from SIX Interbank Clearing is recommended. This tool is available at www.iban.ch.
- The IBAN tool is installed locally and can be used for mass conversions using file input and output as well as for individual queries through a GUI.
- For a mass conversion it is necessary to prepare the data in an input file in the specified format. The data needed to do so is to be exported from the master data of the ERP system and the updated data is to be subsequently imported.
- The IBAN can only be generated by the IBAN tool if the conventional account and the bank clearing number (BC no.) are correct. If the IBAN tool cannot generate an IBAN, the data is to be updated directly with the account holder or the IBAN and BC no. are to be requested.
- To ensure the regular updating of the participating financial institutions and the individual bank algorithms, the IBAN tool has a limited lifespan of **six** months, after which it must be reloaded.
- More extensive information about the IBAN tool can be found in the document entitled "Installation and usage instructions for the IBAN tool" and "IBAN generation and the IBAN tool: interface description and usage possibilities for software companies and financial institutions" can be found at www.iban.ch (both documents are available only in German and French).

Java version

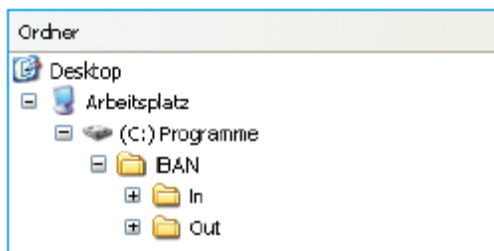
Java version: Installation

Check the Java (JRE/JAVA Runtime Environment) version on the PC:

1. Open the Windows input window: Start → Execute → enter « cmd »
2. Check the Java version: enter « java -version »
3. Requirement: JRE Version 1.5 or higher (for Input-File in XML format: JRE Version 1.4.2._17 or _18). Updates can be obtained through the following link: www.java.com/en/download/

Downloading the IBAN tool:

4. It is recommended that the following directories be created for the IBAN tool:
In «C:\Programme» the directory «IBAN» and the two sub-directories «In» and «Out». The directory structure and naming can be set up individually. The following examples, however, are based upon this directory structure:



5. Download the Java version of the IBAN tool at www.iban.ch and copy into the directory «C:\Programme\IBAN»
6. It is recommended that the file names for the IBAN tool be changed from «dl_tkicch_standardisierung_ibantool.jar» to «ibantool.jar». This simplifies subsequent access.

Java version: Queries in the IBAN tool

Mass processing using the input file:

Further information on the format and processing using ASCII or XML file can be found in the corresponding documents at www.iban.ch.

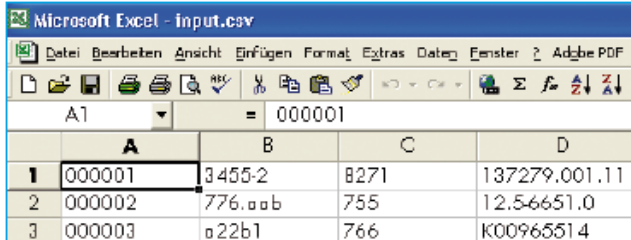
Preparation of input files using the example of an ASCII file using Excel:

1. Download the necessary information (e.g. the beneficiaries account in conventional format) from the master data of the ERP system.
2. Create an Excel file^{*)}: Format cells according to the following structure:

Column	A	B	C <i>oder</i>		D
Contents	Sequence no.	Customer reference	BC number	BIC	Account number
Format	(=6N) mandatory	(27x) optional	(5x) mandatory	(11x) mandatory	(16x) mandatory
Example	000001	3455-2	8271	GUYECHZXXX	137279.001.11

**) Please note: When setting up an Excel file in advance please note the mandatory leading zeroes in the sequence number.*

3. Save the csv file with the file name «input.csv» under «C:\Programme\IBAN\In».



	A	B	C	D
A1	= 000001			
1	000001	3455-2	8271	137279.001.11
2	000002	776.000	755	12.5-6651.0
3	000003	022b1	766	K00965514

Bulk processing:

4. Open the Windows input window: Start → Execute → enter «cmd»

5. Start the bulk processing with the following order:

```
java -jar C:\Programme\IBAN\ibantool.jar -a -i C:\Programme\IBAN\In\input.csv -o C:\Programme\IBAN\Out\output.csv
```

6. An output file with the file name «output.csv» is to be created in «C:\Programme\IBAN\Out»

7. The correctly created IBAN can now again be placed in the master data of the ERP system.

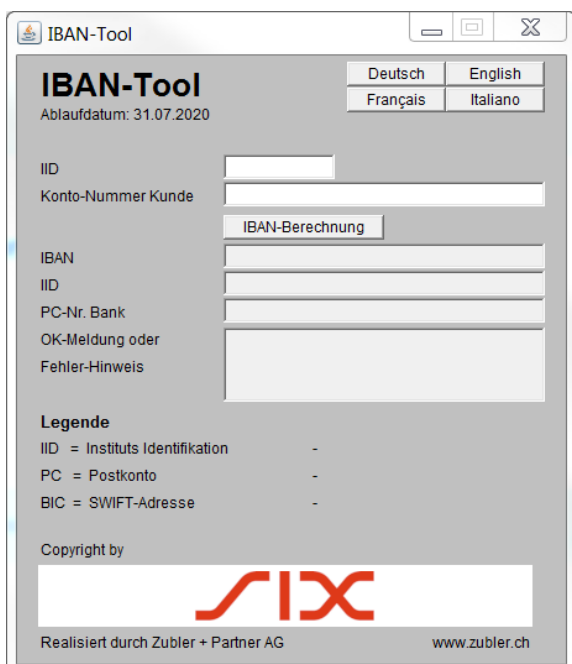
8. Unconverted account numbers are to be updated with the account holder.

Individual query through GUI:

1. Open the Windows input window: Start → Execute → enter « cmd »

2. Start the individual query: java -jar C:\Programme\IBAN\ibantool.jar -g

3. In the GUI for the individual query enter the individual input data (BC/Post account numbers / SWIFT BIC and conventional account numbers or ES encoding lines or segment or encoding lines with the account relevant-data) and start the IBAN generation.



IBAN-Tool
Ablaufdatum: 31.07.2020

Deutsch English
Français Italiano

IID

Konto-Nummer Kunde

IBAN-Berechnung

IBAN


IID

PC-Nr. Bank

OK-Meldung oder Fehler-Hinweis

Legende

IID = Instituts Identifikation -
PC = Postkonto -
BIC = SWIFT-Adresse -

Copyright by 

Realisiert durch Zubler + Partner AG www.zubler.ch

Windows version

Windows version: Installation

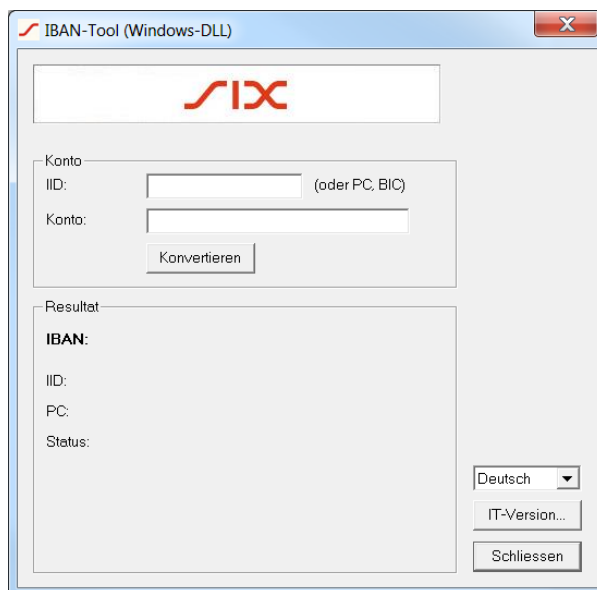
The technical requirement is Windows 98 or higher as the operating system.

1. Download the Windows version of the IBAN-Tool at www.iban.ch.
2. Decompress **IBANKernel.zip** in a directory of your choice (e.g. «C:\Programme\IBAN») and call up IBANTest.exe.
3. Subsequent integration in an application:
 - Copy IBANKernel.DLL in a directory of your choice.
 - Load DLL using LoadLibrary(...) or an equivalent function.

Individual query through GUI:

There is no GUI assessment from bulk processing - only individual queries are possible.

4. In the GUI for the individual query enter the individual input data (BC/Post account numbers / SWIFT BIC and conventional account numbers or ES encoding lines or segment or encoding lines with the account relevant-data) and start the IBAN generation.





Quick reference guide: Installation instructions for the IBAN tool Feedback or questions regarding the IBAN tool

Feedback or questions regarding the IBAN tool

Please direct any feedback or questions regarding use of the IBAN tool to the following address:

SIX Interbank Clearing AG
IBAN-Support
Hardturmstrasse 201
8021 Zürich

Tel: +41 58 399 4420

E-Mail: support.sic@six-group.com