



Swiss Payment Standards

**Swiss Implementation Guidelines
for Customer-Bank Messages
for Credit Transfer (Payment Transactions)**

Customer Credit Transfer Initiation (pain.001)

SPS 2026 Version 2.3, valid from 14 November 2026

Change history

All changes made to this document are listed below with the version number, change date, a brief description of the change and references to the chapters affected.

Version	Date	Description of the change	Chapter
2.3	20.02.2026	Adjustments due to the discontinuation of euroSIC as of November 2027 and editorial changes	All
2.2	24.02.2025	Editorial changes	All
2.2	24.02.2025	Adjustment to "Use of address information"	3.11
2.2	24.02.2025	Adjustment to the XML schema validation	3.6
2.2	24.02.2025	Adjustment to the character set for the reference elements	3.2
2.2	24.02.2025	Adjustment to "Name" to 140 characters (Removal of the restriction of 70 characters except for SEPA)	All
2.1.1	08.03.2024	Editorial adjustment	3.12
2.1	20.02.2024	Adjustments in relation to instant payments and editorial changes (see separate delta commentary)	All
2.0.2	20.02.2023	Editorial changes Adjustments in relation to the SEPA 2023 release (forwarding of data elements and adjusted numbering of attributes)	All
2.0.1	28.02.2022	Character conversion updates, flowchart to determine the payment type, error codes	3.1, 3.15, 4 et seq.
2.0	28.07.2021	Complete revision	All
1.11	26.02.2021	Last version for Schema version 2009	
1.0	15.02.2010	First edition	

Table 1: Change history

Please address all suggestions, corrections, and proposed improvements to this document to:

SIX Interbank Clearing Ltd

Hardturmstrasse 201
CH-8005 Zurich

SIC Operations

T +41 58 399 42 00

Contact: www.six-group.com/payment-standards/contact

General notes

SIX Interbank Clearing Ltd ("**SIC Ltd**") reserves the right to modify this document, as the need arises, at any time without prior notice.

SIC Ltd reserves all rights for this document including the rights of photomechanical reproduction, storage on electronic media and the translation into foreign languages.

Although great care has been taken in the compilation and preparation of this work to ensure accuracy, errors and omissions cannot be entirely ruled out. SIC Ltd cannot be held liable for any decision made or action taken in reliance on the information in this document or for any consequential, special or similar damages.

To improve readability, the use of masculine and feminine forms of language are avoided wherever possible. All personal designations are to be regarded as gender neutral.

If you detect any errors in this document or have any ideas or suggestions for improvements, we would be extremely grateful if you would notify us via www.six-group.com/payment-standards/contact.

Table of contents

Change history	2
General notes	3
Table of contents	4
Table of tables	6
Table of figures	7
1 Introduction	8
1.1 Change control	8
1.2 Reference documents	9
1.3 Overview of message standards.....	10
1.3.1 ISO 20022	10
1.3.2 SEPA message standard.....	11
1.4 Limitations.....	11
1.5 Representation conventions.....	11
1.5.1 Designation of XML elements	11
1.5.2 Table data.....	11
1.5.3 Colours in the tables.....	12
1.5.4 Tree structure representation in the tables	12
1.5.5 Representation of choices	12
1.5.6 Status	13
1.5.7 Field definitions	14
1.6 Representation of XML messages	14
2 Customer Credit Transfer Initiation (pain.001)	15
2.1 General	15
3 Functional specifications	16
3.1 Character set.....	16
3.2 Character set for the reference elements	17
3.3 Spaces.....	17
3.4 Delivery of empty elements.....	18
3.5 Use of XML CDATA sections.....	18
3.6 XML schema validation.....	19
3.7 Representation conventions for amount fields	20
3.8 Duplicate checking.....	20
3.9 Software information	21
3.10 Designation of the parties of a payment.....	22
3.11 Use of address information	23
3.12 Identification of the financial institutions (Agents)	27
3.13 Identification of the other parties (Parties).....	30
3.14 References.....	33
3.14.1 References in the processing chain.....	33
3.14.2 Customer references	34
3.15 Payment types	35
3.16 QR-Bill	38
3.17 Instant payments in Switzerland and Liechtenstein	38
3.18 Forwarding and truncation of data elements.....	38

4	Technical specifications	39
4.1	Group Header (GrpHdr, A level)	39
4.2	Payment Information (PmtInf, B level)	43
4.3	Credit Transfer Transaction Information (CdtTrfTxInf, C level)	54
5	Examples of payment instructions as "pain.001" messages	75
5.1	Business case for QR-Bill with QR reference and SCOR reference	75
5.1.1	Example data	75
5.2	Business case for foreign currency payment (domestic) and SEPA.....	77
5.2.1	Example data	77
Annex A: XML schema		79
Annex B: Mapping the Swiss QR code in a QR-bill payment part into "pain.001"		80

Table of tables

Table 1:	Change history	2
Table 2:	Reference documents	9
Table 3:	Links to corresponding websites	9
Table 4:	Status values of XML elements	13
Table 5:	Escape characters	16
Table 6:	Special characters for the reference elements	17
Table 7:	Software information	21
Table 8:	Designations of the parties in credit transfers	22
Table 9:	Data elements for address data (generic)	24
Table 10:	Identification of the financial institutions by payment type	28
Table 11:	SPS payment types	29
Table 12:	Identification of other party data elements (generic)	32
Table 13:	SPS payment types	37
Table 14:	Group Header (GrpHdr, A-level).....	42
Table 15:	Payment information (PmtInf, B level).....	53
Table 16:	Credit transfer transaction information (CdtTrfTxInf, C level).....	74
Table 17:	Data of payment group 1.....	75
Table 18:	Transaction data	75
Table 19:	Data of payment group 2.....	76
Table 20:	Transaction data	76
Table 21:	Data of payment group 1.....	77
Table 22:	Transaction data	77
Table 23:	Data of payment group 2.....	78
Table 24:	Data of the first transaction of this payment group	78
Table 25:	Data of the second transaction of this payment group	78
Table 26:	Mapping the Swiss QR Code in a QR-bill payment part into "pain.001"	82
Table 27:	Detailed description of structured and unstructured remittance information	83

Table of figures

Figure 1:	Payment initiation message flow overview.....	10
Figure 2:	Example of a choice.....	12
Figure 3:	Example of a graphical representation of an XML message	14
Figure 4:	Basic message structure of the XML message "pain.001"	15
Figure 5:	Use of the Swiss XML schema	19
Figure 6:	Data elements for address data (generic).....	23
Figure 7:	Financial institution identification data elements (generic).....	27
Figure 8:	Identification of other party data elements (generic)	30
Figure 9:	References	33
Figure 10:	Determining the payment type	36
Figure 11:	Group Header (GrpHdr)	39
Figure 12:	Payment information (PmtInf)	43
Figure 13:	Credit transfer transaction information (CdtTrfTxInf).....	54

1 Introduction

The *Swiss Payment Standards* for the implementation of the message standard for "Payments Initiation" and "Cash Management" based on the ISO 20022 standard are developed on behalf of PaCoS (Payments Committee Switzerland). This version is based on the "ISO Maintenance Release 2019" and the current EPC recommendations.

The document **Business Rules** describes the requirements of business representatives on the part of the users, the financial institutions and the software providers from the process perspective. It covers the following topics:

- Definition and description of the individual business cases with the relevant parties and the messages used (payment types, report variants).
- Representation of the message structures as an overview with expansion upon individual structural elements.
- Description of the most important validation rules and error handling.

The **Implementation Guidelines** serve as a guide for the technical implementation of the standard and provide assistance for the realisation of the individual message types. They describe the XML structures and validation rules in detail.

1.1 Change control

The *Swiss Business Rules* and *Implementation Guidelines* are subject to change by:

SIX Interbank Clearing Ltd
Hardturmstrasse 201
CH-8021 Zurich

Changes and enhancements are made by SIC Ltd.

The current version of this document can be downloaded from the website of SIC Ltd:
www.iso-payments.ch.

1.2 Reference documents

Ref.	Document	Title	Source
[1]	Payments Maintenance 2019	<i>Message Definition Report</i> , edition September 2019	ISO
[2]	pain.001.001.09	<i>XML Schema Customer Credit Transfer Initiation</i> , version 9	ISO
[3]	pain.002.001.10	<i>XML Schema Customer Payment Status Report</i> , version 10	ISO
[4]	EPC125-05	<i>SEPA Credit Transfer Scheme Rulebook 2025</i> , version 1.0	EPC
[5]	EPC132-08	<i>SEPA Credit Transfer Implementation Guidelines 2025</i> , version 1.0	EPC
[6]	<i>Swiss Business Rules</i>	<i>ISO 20022 Payments – Swiss Business Rules for Payments and Cash Management for Customer-Bank Messages</i>	SIC
[7]	<i>Swiss Implementation Guidelines QR-bill</i>	<i>Swiss Implementation Guidelines QR-bill – technical and functional specifications for the payment section using the Swiss QR Code</i> , version 2.3	SIC
[8]	External Code Sets	Inventory of External Code Sets	ISO
[9]	EPC230-15	<i>EPC Clarification Paper on the Use of Slashes in References, Identifications and Identifiers</i>	EPC
[10]	QR-IBAN/QR-IID	Technical information on QR-IID and QR-IBAN	SIC

Table 2: Reference documents

Organisation	Link
ISO	www.iso20022.org
EPC	www.europeanpaymentscouncil.eu
SIX	www.iso-payments.ch www.sepa.ch www.six-group.com/interbank-clearing

Table 3: Links to corresponding websites

1.3 Overview of message standards

1.3.1 ISO 20022

The ISO 20022 message standard provides the specifications of the "Payment Initiation Messages":

- Customer Credit Transfer Initiation (pain.001) and
- Customer Direct Debit Initiation (pain.008)
- Customer Payment Status Report (pain.002)

All these messages are described in the document *ISO 20022 Message Definition Report: Payments – Maintenance 2019* [1].

The messages "pain.008" and "pain.002" are handled in separate documents in Switzerland.

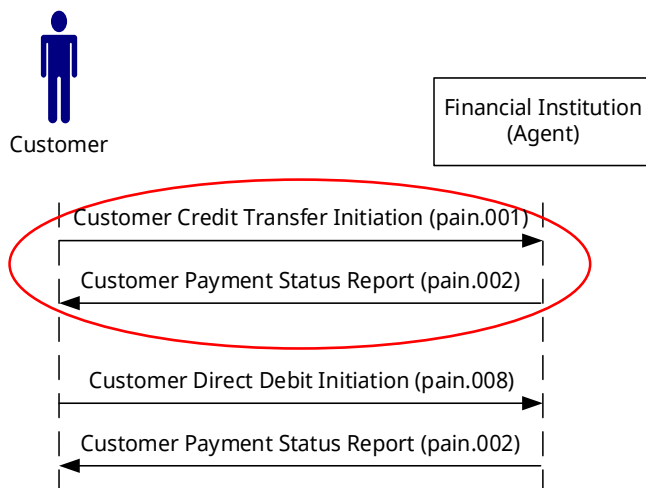


Figure 1: Payment initiation message flow overview

The message flows are clarified in Figure 1 above. The message "pain.002" is returned by the recipient of any messages "pain.001" and "pain.008" to the sender for confirmation of the validation result.

The messages specified in the ISO 20022 standard can be used universally, apply to all currencies and cover all eventualities. For special areas of application and country-specific circumstances, the messages are suitably modified, i.e. not all possibilities of the standard are used.

1.3.2 SEPA message standard

For payments to the SEPA area (Single Euro Payments Area), the SEPA message standard and the Swiss Payment Standards are relevant (see chapter 3.15 "Payment types", payment type "S").

For efficient use in the SEPA area (EU countries, EEA countries, Switzerland, United Kingdom (UK), Monaco, Andorra, San Marino, Vatican City State), restrictions were made for payment traffic in accordance with the ISO 20022 standard, which have been approved by the European Payments Council ("EPC"), the decision-making body of the European banks and banking associations.

The SEPA message standard is specified in the following documents and published on the website of the European Payments Council ("EPC"):

- EPC125-05 *SEPA Credit Transfer Rulebook* [4]
- EPC132-08 *SEPA Credit Transfer Implementation Guidelines* [5]

1.4 Limitations

These *Implementation Guidelines* only specifies the customer-bank message type "Customer Credit Transfer Initiation".

This document does not cover all the aspects concerning the communication channels used for the message transfer between the customer and the financial institution and their security features. Such aspects are entirely the responsibility of the financial institutions involved and their customers.

1.5 Representation conventions

The following representation conventions apply to this document.

1.5.1 Designation of XML elements

In several publications, the names of XML elements are written as one single term without intervening spaces, e.g. *CreditTransferTransactionInformation*. In order to improve readability, such spaces are frequently re-inserted within this document.

1.5.2 Table data

The tables contain information from ISO 20022 (multiplicity, message item, XML tag). The following additional information from the Swiss Payment Standards can be found in the tables:

- Status of the element (pursuant to the definition in chapter 1.5.6 "Status")
- General definition
- Payment type specific definitions
- Error code, which is reported back in case of any errors in the "Customer Payment Status Report" (pain.002).

Note: If the schema validation leads to the rejection of a complete message, the error code "FF01" is reported back. Since this response generally applies to all elements of the table, it is not listed as a comment for each element.

1.5.3 Colours in the tables

The column headings are coloured **brown-grey** for information on the ISO 20022 standard and **light grey** for information on the Swiss Payment Standards.

Elements that contain at least one sub-element are highlighted in **light blue** in the columns for the ISO 20022 standard.

1.5.4 Tree structure representation in the tables

In order to be able to recognise where an element is located in the tree structure, the nesting depth is indicated with a preceding "+" sign for each level in the message item. For example, the IBAN in *<Payment Information>* is displayed as follows:

```

Payment Information
+Debtor Account
++Identification
+++IBAN
    
```

1.5.5 Representation of choices

Elements with a choice are marked in the "XML Tag" column as follows:

```

{Or   for the beginning of the choice
Or}   for the end of the choice
    
```

Example:

Payment Information +Debtor Account ++Identification	Id	1..1	M
Payment Information +Debtor Account ++Identification +++IBAN	IBAN {Or	1..1	R
Payment Information +Debtor Account ++Identification +++Other	Othr Or}	1..1	D

Figure 2: Example of a choice

1.5.6 Status

The following status values (information about use) are possible for the individual XML elements in accordance with the Swiss Payment Standards:

Status	Designation	Description
M	Mandatory	The element is mandatory. If the element is not supplied, a financial institution will reject the processing of the message.
R	Recommended	The use of the element is recommended. If the element is not supplied, a financial institution will still process the message.
O	Optional	The element is optional. <ul style="list-style-type: none"> Customers may supply this element. If supplied, the financial institutions will process the element in accordance with the SPS definition.
D	Dependent	The use depends on the use of other elements <ul style="list-style-type: none"> Supply is mandatory Supply is optional Supply is not allowed The corresponding SPS definition of the element must be consulted.
BD	Bilaterally Determined	The element is optional. Some financial institutions offer additional services when using the element. These must be agreed on with the financial institution. If there is no agreement, the element will be ignored (not processed and not forwarded in interbank traffic).
N	Not Allowed	The element must not be used. If the element is supplied, the financial institution will reject the entire message to the relevant B or C level.

Table 4: Status values of XML elements

1.5.7 Field definitions

Only those elements for which SPS-specific definitions have been defined are described in these *Implementation Guidelines*.

Element groups for which no SPS-specific rules have been defined are shown in the tables without their sub-elements.

Example:

2.128	Credit Transfer Transaction Information +Resittance Information ++Structured +++Invoice	Invoice	0..1	O		S: Darf nicht verwendet werden.	CH17
-------	--	---------	------	---	--	---------------------------------	------

Element groups that occur several times in the schema (e.g. postal addresses) and are defined in the same way in SPS are described generically in chapter 3 "Functional specifications" and reference is made to these general definitions in the tables of chapter 4 "Technical specifications".

Example:

2.81	Credit Transfer Transaction Information +Ultimate Creditor ++Postal Address	PstAdr	0..1	D	Nur strukturierte Adresselemente zugelassen. <u>Generelle Beschreibung der Subelemente siehe Kapitel 3.11</u> <u>«Verwendung von Adressinformationen»</u>	S: Wird im Interbankenverkehr nicht weitergeleitet.	CH17
------	---	--------	------	---	---	---	------

Deviations are described in more detail in the tables only in case of deviations (e.g. a sub-element is exceptionally not supported).

If there are no deviations, the data group is displayed in the main table without being expanded (without its sub-elements).

1.6 Representation of XML messages

The logical structure of XML messages corresponds to a tree structure. This structure can be represented in different ways: graphically, in a table or by text. Textual representation is well suited for specific message examples, while tabular and graphical representation are mainly used for visual explanation of the XML schemas. The figures used in this document are based on the Swiss Payment Standards schema.

XML editors with the option of graphical representation use symbols that may look slightly different depending on the type of editor (the figures in this document were created using the editor *XMLSpy* from Altova GmbH). The most important symbols are briefly introduced in the *Swiss Business Rules* [6]. Detailed information can be found in the user manual or online help of the XML editor used.

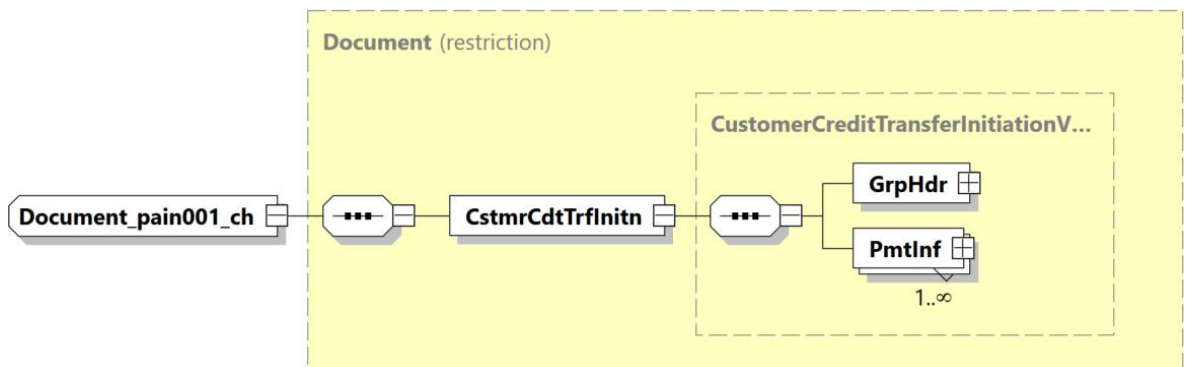
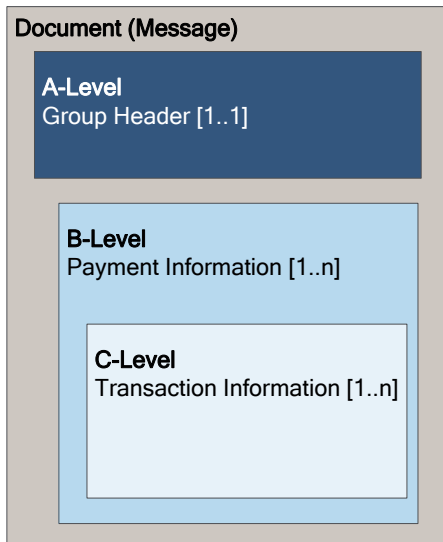


Figure 3: Example of a graphical representation of an XML message

2 Customer Credit Transfer Initiation (pain.001)

2.1 General

The XML message "Customer Credit Transfer Initiation" (pain.001) is used to electronically initiate transfer orders by customers to the remitting financial institution. It is applied as based on the ISO 2022 XML schema "pain.001.001.09".



The XML message "pain.001" is basically structured as follows:

- **A level:** Message level, "Group Header". This block must be present exactly once.
- **B level:** At the debtor level (on the debit side), "Payment Information". This block must occur at least once and usually contains several C levels.
- **C level:** At the creditor level (on the credit side), "Credit Transfer Transaction Information". This block must occur at least once per B level. It contains all C levels (transactions) associated with the B level (debit)

Figure 4: Basic message structure of the XML message "pain.001"

The **functional specifications** contained in chapter 3 "Functional specifications" cover the following topics in particular:

- Character set
- References
- Duplicate checking

The **technical specifications** of the XML message "Customer Credit Transfer Initiation" (pain.001) contained in chapter 4 "Technical specifications" describe each of these message levels in a separate sub-chapter:

- 4.1 "Group Header (GrpHdr, A level)"
- 4.2 "Payment Information (PmtInf, B level)"
- 4.3 "Credit Transfer Transaction Information (CdtTrfTxInf, C level)"

3 Functional specifications

3.1 Character set

Only characters in the Unicode character set UTF-8 (8-bit Unicode Transformation Format) can be used in ISO 20022 XML messages (the message must be UTF-8 encoded, without a BOM – Byte Order Mark).

In accordance with the Swiss Payment Standards (SPS), only a subset of characters from Unicode character set UTF-8 are permitted in XML messages. This includes the printable characters from the following Unicode blocks:

- Basic Latin (Unicode codepoints U+0020–U+007E)
- Latin1 Supplement (Unicode codepoints U+00A0–U+00FF)
- Latin Extended A (Unicode codepoints U+0100–U+017F)

As well as the following additional characters:

- Œ – (LATIN CAPITAL LETTER S WITH COMMA BELOW, Unicode codepoint U+0218)
- œ – (LATIN SMALL LETTER S WITH COMMA BELOW, Unicode codepoint U+0219)
- Ť – (LATIN CAPITAL LETTER T WITH COMMA BELOW, Unicode codepoint U+021A)
- ť – (LATIN SMALL LETTER T WITH COMMA BELOW, Unicode codepoint U+021B)
- € – (EURO SIGN, Unicode codepoint U+20AC)

If characters that are not permitted are transmitted, the message will be rejected. For interbank forwarding (e.g. SEPA, Swift, etc.), some of the characters must be converted by the banks in accordance with an [external character conversion table](#).

Escapes

For the following characters, use the escaped form (optional in some cases):

Character	Description	Escape	Comments
&	AMPERSAND	&	Only escape allowed
<	LESS-THAN SIGN	<	Only escape allowed
>	GREATER-THAN SIGN	>	Escape or character allowed
'	APOSTROPHE	'	Escape or character allowed
"	QUOTATION MARK	"	Escape or character allowed

Table 5: *Escape characters*

3.2 Character set for the reference elements

Only a restricted character set is permitted for the following reference elements:

- "Message Identification" (A level)
- "Payment Information Identification" (B level)
- "Instruction Identification" (C level)
- "End To End Identification" (C level)

The permitted characters for these elements are:

- ABCDEFGHIJKLMNOPQRSTUVWXYZ
- abcdefghijklmnopqrstuvwxyz
- 1234567890
- Spaces
- The following special characters:

Character	Description	Code
'	Apostrophe	U+0027
(Left parenthesis	U+0028
)	Right parenthesis	U+0029
+	Plus sign	U+002B
,	Comma	U+002C
-	Hyphen-minus	U+002D
.	Full stop	U+002E
/	Slash (Solidus)	U+002F
:	Colon	U+003A
?	Question mark	U+003F

Table 6: Special characters for the reference elements

These reference elements are not allowed to start with spaces or a "/", end with a "/" or contain "/" in any position.

Note: In general, the requirements developed by the EPC pursuant to the document *EPC230-15 EPC Clarification Paper on the Use of Slashes in References, Identifications and Identifiers* apply.

3.3 Spaces

The following rules must be observed for the use of spaces:

- Only the character SP (SPACE, 0x20) may be used as a space character.
- Reference elements are not allowed to start with spaces.
- Elements which contain code values are not allowed to contain spaces, e.g the elements "Category Purpose" or "Service Level".

However, spaces may still occur within an element, for example, a double name without a hyphen such as "Meier Mueller" or "Example Company".

3.4 Delivery of empty elements

- The use of empty elements is not allowed
- Elements are not allowed to contain only spaces.
- Delivery of empty group elements is not permitted; they must always contain at least one sub-element.

If empty elements are delivered, a schema error or rejection may occur as a result of business validation.

3.5 Use of XML CDATA sections

The use of CDATA is not supported; any such information will be ignored.

3.6 XML schema validation

The technical validation of the various XML messages is carried out with the help of XML schemas. These define the elements to be used, their status (mandatory, optional, dependent), the format of their content and the content itself (in certain cases the permitted codes are listed in the XML schema).

For the Swiss Payment Standards, specific XML schemas are issued as variants of the ISO 20022 XML schemas, for example where non-required elements have been omitted or statuses have been changed. These XML schemas define the data scope valid for Switzerland.

Incorrect messages resulting from a schema violation are rejected by the financial institutions.

To prevent file rejections during the file submission on the customer side due to a schema error, software providers are instructed to test an ISO-20022 message against the corresponding pain.001 schema in advance.

The names of the XML schemas in the Swiss Payment Standards as well as links to the original XSD files are listed in Annex A.

Use of the Swiss XML schema

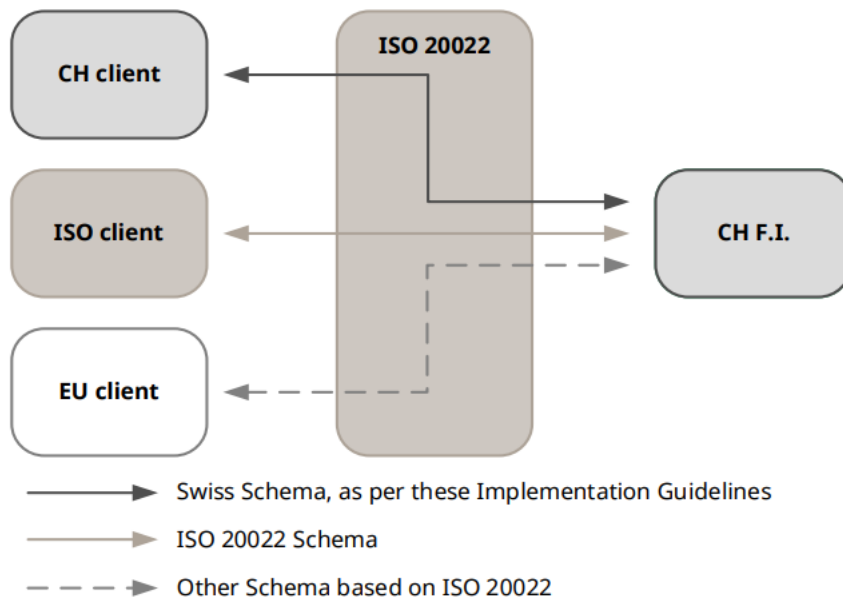


Figure 5: Use of the Swiss XML schema

The definitions in the Swiss XML schema correspond to the descriptions in these *Implementation Guidelines* and are primarily intended to validate created XML files.

3.7 Representation conventions for amount fields

In the XML context, several representation formats are permitted in the amount fields. To ensure smooth processing of the payment, the following representation is recommended:

- No use of leading or trailing padding characters (spaces, white space, zeros, plus signs).
- If a decimal separator is used, then it must be a full stop/period.
- The maximum number of decimal places depends on the currency in accordance with ISO 4217.

Regardless of the representation format used, the financial institutions are permitted to convert all amount fields to a consistent representation format for further processing.

Correct examples for amount fields are e.g. for CHF:

- Five centimes: 0.05
- One franc and ten centimes: 1.1 or 1.10
- One franc: 1 or 1.0 or 1.00

Incorrect examples of amount fields would be:

- Five centimes: 05 or .05
- One franc: 000001 or 1.

3.8 Duplicate checking

The duplicate checking of "pain.001" messages submitted can vary between financial institutions. Both checks of individual submitted content elements and checks at the level of the submission channel are conceivable.

Duplicate checking is carried out at the Swiss financial institutions at least at the "Document" (message) level. For this reason, the element "Message Identification" (<MsgId>) must be uniquely assigned to serve as a criterion for preventing duplicate processing in the event of files being submitted twice by mistake. The uniqueness is checked here by most financial institutions over a period of at least 90 days.

It is recommended to keep the "Message Identification" as unambiguous as possible in order to facilitate investigations also over longer time periods.

3.9 Software information

The Swiss financial institutions recommend to always provide information about the software used to create the message in order to facilitate support requests in the message "pain.001". The supply of the correct and complete information is optional.

For this purpose, the element <GrpHdr>/<InitgPty>/<CtctDtls>/<Othr> must be used as follows. This element can be supplied a maximum of four times, with the sub-elements filled as described in the following table:

Instance	Sub-element	Value	Description
1	<ChanlTp>	NAME	Code (in capital letters)
	<Id>	<i>Product name</i>	Name of the software product
2	<ChanlTp>	PRVD	Code (in capital letters)
	<Id>	<i>Manufacturer name</i>	Name of the software manufacturer
3	<ChanlTp>	VRSN	Code (in capital letters)
	<Id>	<i>Software version</i>	Version of the software
4	<ChanlTp>	SPSV	Code (in capital letters)
	<Id>	<i>SPS IG version</i>	Version of the SPS IG in nnnn format (e.g. 0200 for IG version 2.0) implemented by the software (format is not validated).

Table 7: Software information

3.10 Designation of the parties of a payment

For payments with "pain.001", the parties involved are named as follows:

Designation	Comment	ISO 20022
Submitting party	Submitting party of the pain.001 payment message	Initiating party
Ultimate debtor		Ultimate debtor
Debtor	Is a customer of the debtor agent	Debtor
Debtor agent	Maintains the debtor account	Debtor agent
Intermediary institution	Manages the creditor agent account, if applicable	Intermediary agent
Creditor agent	Maintains the creditor account	Creditor agent
Creditor	Is a customer of the creditor agent	Creditor
Ultimate creditor		Ultimate creditor

Table 8: Designations of the parties in credit transfers

The parties highlighted in grey in the table are the financial institutions (agents); the parties highlighted in white are the other parties (parties).

The identification of the agents and parties in the "pain" messages is carried out via their own specific data structures, which are described in a generic manner in the following chapters.

Deviations from the generic rules for individual parties are described in chapter 4 "Technical specifications" for the respective party.

3.11 Use of address information

The following address elements can be used in "pain.001":

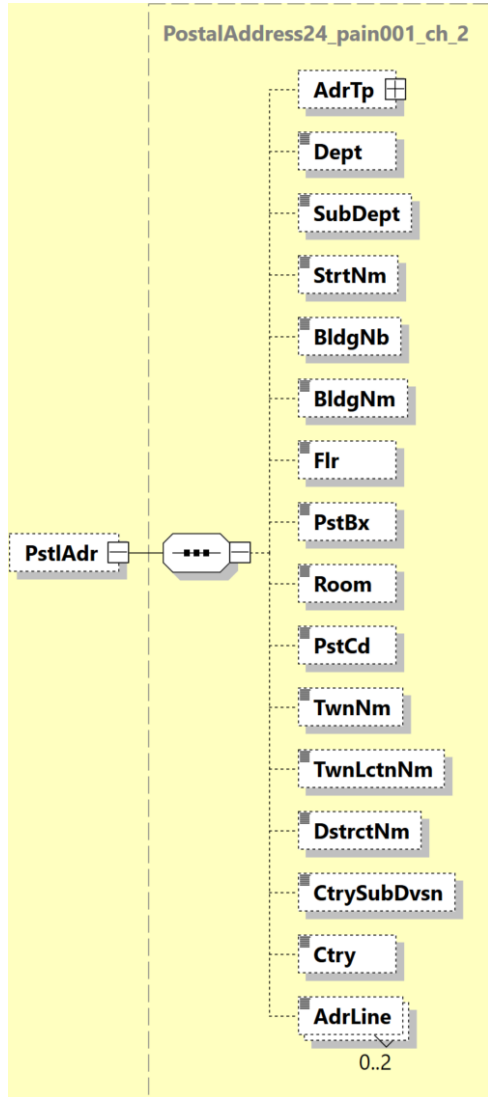


Figure 6: Data elements for address data (generic)

ISO 20022 Standard			Swiss Payment Standards		
Message Item	XML Tag	Mult	General Definition	Status	Remark
Address Type	AdrTp	0..1	Address Type	N	Must not be sent
Department	Dept	0..1	Department	O	
Sub Department	SubDept	0..1	Sub Department	O	
Street Name	StrtNm	0..1	Street Name	R	Use is recommended
Building Number	BldgNb	0..1	Building Number	R	Use is recommended
Building Name	BldgNm	0..1	Building Name	O	
Floor	Flr	0..1	Floor	O	
Post Box	PstBx	0..1	Post Box	O	
Room	Room	0..1	Room	O	
Post Code	PstCd	0..1	Post Code	R	Use is recommended
Town Name	TwnNm	0..1	Town Name	M	Must be used.
Town Location Name	TwnLctnNm	0..1		O	
District Name	DstrctNm	0..1	District/commune	O	
Country Sub Division	CtrySubDvsn	0..1	Part of the country (e.g. canton, province, state)	O	
Country	Ctry	0..1	Country (country code as per ISO 3166, Alpha-2 code)	M	Must be used.
Address Line	AdrLine	0..7	Unstructured Address Information	BD	Maximum 2 lines allowed if offered as part of the hybrid address. Can be used for address information which cannot be supplied in a structured element. Data already provided in another element must not be repeated.

Table 9: Data elements for address data (generic)

The addresses of the parties involved, for example the creditor, can either be structured in the element "Name" and in the element "Postal Address" (recommended sub-elements are: "Street Name", "Building Number", "Post Code", "Town Name" and "Country") or be hybrid (sub-element "Address Line"). The use of structured addresses is recommended for all payment types.

In general, the sub-elements "Postal Address" are only allowed in combination with the element "Name". In this case, the regulatory and other requirements for the respective payment type or destination must be observed.

Since November 2025, the addresses can be supplied in one of the two following variants in "pain.001":

"Structured" variant:

- "Name"
- "Street Name" and "Building Number" (recommended)
- Other structure elements
- "Post Code" and "Town Name"
- "Country"
- The sub-elements "Town Name" and "Country" must always be supplied.

In "pain.001" for example, it would look like this:

```

<Cdtr>
  <Nm>EXAMPLE LTD</Nm>
  <PstlAdr>
    <StrtNm>Street Example</StrtNm>
    <BldgNb>24</BldgNb>
    <PstCd>3000</PstCd>
    <TwnNm>Berne</TwnNm>
    <Ctry>CH</Ctry>
  </PstlAdr>
</Cdtr>

```

Until further notice, the specification of the house number (sub-element "Building Number") is permitted in the sub-element "Street Name". In particular for SEPA and cross-border payments (payment types "S" and "X"), the transaction may still be rejected depending on the regulations and processing in the recipient country.

For the element "Name", the restriction of 70 characters still applies for SEPA payment type "S".

"Hybrid" variant:

- "Name"
- Other structured elements
- The sub-elements "Town Name" and "Country" must always be supplied.
- Two uses of "Address Line" are permitted – 2*70 characters maximum, containing information which cannot be provided in any of the structured fields. Data already provided in another structured address element must not be repeated.

In "pain.001" for example, it would look like this:

```

<Cdtr>
  <Nm>John Smith</Nm>
  <PstlAdr>
    <StrtNm>Keppel Bay</StrtNm>
    <BldgNb>24</BldgNb>
    <PstCd>123456</PstCd>
    <TwnNm>Singapore</TwnNm >
    <Ctry>SG</Ctry>
    <AdrLine>Carribean At Keppel Bay</AdrLine>
    <AdrLine>05-66</AdrLine>
  </PstlAdr>
</Cdtr>

```

Notes on their application to cross-border orders:

For the element "Name", the restriction of 70 characters still applies for SEPA payment type "S".

It is recommended to ask the debtor's financial institution about any further rules before placing the order. The rules may vary depending on currency, destination country or correspondent bank.

3.12 Identification of the financial institutions (Agents)

The element "Financial Institution Identification" for the identification of the institutions contains the following sub-elements:

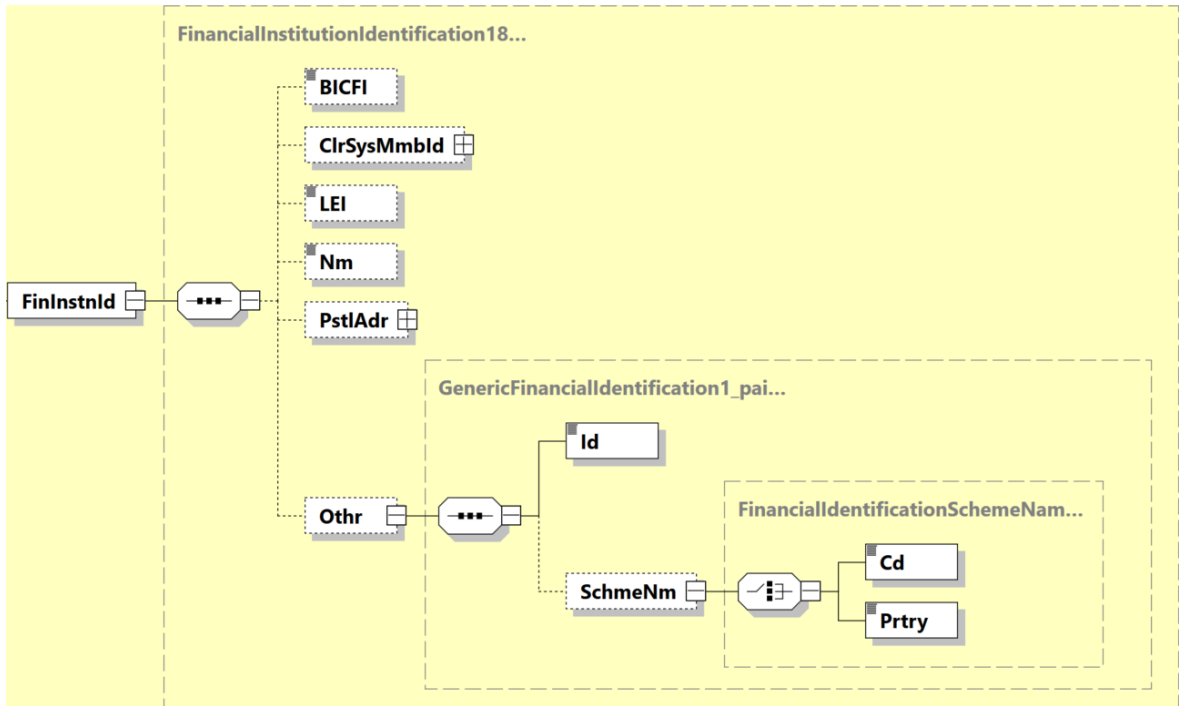


Figure 7: Financial institution identification data elements (generic)

It is essential that the Creditor Agent be addressed through at least one of the following options. Depending on the payment type, only certain options are permitted.

- Option 1: When using an IBAN (CH/LI) for payment type "D" and generally for payment type "S", the Creditor Agent can be omitted.
- Option 2: Swiss/Liechtenstein institution identification (IID) in element `.../FinInstnId/ClrSysMmbId` (payment types "D" and "X" V1)
- Option 3: BIC in element `.../FinInstnId/BICFI` (recommended for payment type "X")
- Option 4: Proprietary institution identification in the element `.../FinInstnId/ClrSysMmbId` together with full address (payment type "X"; for "X" V1, the Swiss IID is required in accordance with option 2)
- Option 5: Full address only (name and address in the elements `.../FinInstnId/Nm` and `.../FinInstnId/PstlAdr` (payment type "X"))

Limitations:

- If both IBAN/QR-IBAN and IID or BIC are supplied, the Creditor Agent is determined from the IBAN when the payment is executed.
- The simultaneous use of sub-elements `.../FinInstnId/BICFI` and `.../FinInstnId/ClrSysMmbId` is not allowed.
- "Postal Address" is only allowed in combination with "Name".

Identification in "pain.001" is performed in accordance with the above-mentioned specifications using the following data elements:

ISO 20022 Standard			Swiss Payment Standards	
Message Item	XML Tag	Mult	General Definition	Remark
Financial Institution Identification	FinInstnId	1..1	Financial Institution Identification	
Financial Institution Identification +BICFI	BICFI	0..1	BIC of the Financial Institution as per ISO 9362	
Financial Institution Identification +Clearing System Member Identification	ClrSysMmbId	0..1	Clearing System Identification	
Financial Institution Identification +Clearing System Member Identification ++Clearing System Identification	ClrSysId	0..1	Clearing System Identification	
Financial Institution Identification +Clearing System Member Identification ++Clearing System Identification +++Code	Cd	1..1	Code	
Financial Institution Identification +Clearing System Member Identification ++Clearing System Identification +++Proprietary	Prtry	1..1	Proprietary	
Financial Institution Identification +Clearing System Member Identification ++Member Identification	MmbId	1..1	Clearing System Member Identification (e.g. IID, sort code)	
Financial Institution Identification +LEI	LEI	0..1	Legal Entity Identifier	
Financial Institution Identification +Name	Nm	0..1	Name of the Financial Institute	
Financial Institution Identification +Postal Address	PstlAdr	0..1	Postal Address	For a general description of the sub-elements, see chapter 3.11 "Using address information"
Financial Institution Identification +Other	Othr	0..1	Other Identification of the Financial Institute	
Financial Institution Identification +Other ++Identification	Id	1..1	Identification	
Financial Institution Identification +Other ++Scheme Name	SchmeNm	0..1	Name of the Identification Scheme	
Financial Institution Identification +Other ++Scheme Name +++Code	Cd	1..1		
Financial Institution Identification +Other ++Scheme Name +++Proprietary	Prtry	1..1		

Table 10: Identification of the financial institutions by payment type

Payment type	D	S	X	C
Title	Domestic	SEPA	Cross-border and foreign currency domestic	Bank check/ PostCash Domestic and cross-border
Comment	V1: Payment V2: Instant payment		V1: Foreign currency (FC) domestic V2: Cross-border	
Payment Method	TRF	TRF	TRF	CHK
Service level	SEPA not permitted	SEPA	SEPA not permitted	SEPA not permitted
Local instrument	V2: INST/ITP	INST/ITP		
Creditor account	V1: IBAN (QR IBAN) or account V2: IBAN (QR IBAN)	IBAN	IBAN or account	Must not be provided
Creditor agent	Financial institution Domestic (CH/LI or with SIC connection): if the account number is used instead of the IBAN*, it is mandatory to use either: a. IID or b. BICFI	BICFI (optional)	V1: Financial institution Domestic (CH/LI): if IBAN*, then agent optional a. BICFI (CH) b. IID (optional: FI name and address) c. FI name and address V2: Financial institution cross-border a. BICFI International b. Bank code* and FI name and address c. FI name and address	Must not be provided
Currency	V1: CHF/EUR (EUR until Nov. 2027) V2: CHF	EUR	V1: All except CHF/EUR (EUR from Nov. 2027) V2: All	all

Table 11: SPS payment types

* Optional when using an IBAN/QR-IBAN, as the creditor agent is then determined from IBAN/QR-IBAN

3.13 Identification of the other parties (Parties)

The following elements can generally be used in "pain.001" for the identification of other parties (Debtor, Creditor, Ultimate Debtor, Ultimate Creditor, Account Owner, etc.):

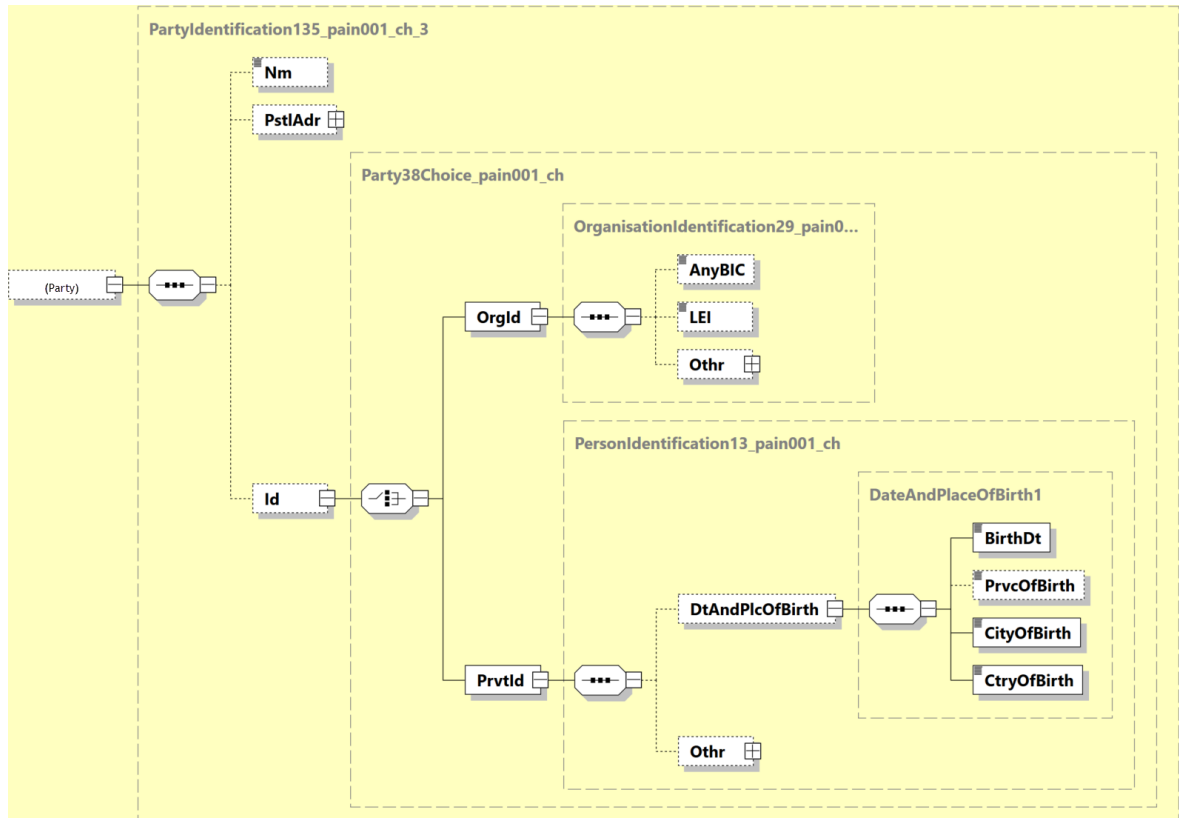


Figure 8: Identification of other party data elements (generic)

Debtor/Creditor, Ultimate Debtor / Ultimate Creditor

The description consists of the following elements:

- Name in the element `.../Nm` (**mandatory**)
- Sub-element `.../PstlAdr`, whereby the specification of the place in element `/TwnNm` and the domicile country in element `/Ctry` is mandatory when using the structured address.
- Additional information in the following sub-elements:
 - a) `.../Id/OrgId/AnyBIC` (Business Identification Code)
 - b) `.../Id/OrgId/LEI` (Legal Entity Identification)
 - c) `.../Id/OrgId/Othr` (Organisation Identification/Other)
 - d) `.../Id/IdPrvtId` (Private Identification)

The forwarding of the relevant information is governed by the rules of the respective network or scheme and is described in chapter 4.

ISO 20022 Standard			Swiss Payment Standards	
Message Item	XML Tag	Mult	General Definition	Remark
Name	Nm	0..1	Name	
Postal Address	PstlAdr	0..1	Address	For a general description of the sub-elements, see chapter 3.11 "Using address information"
Identification	Id	0..1	Identification	
Identification +Organisation Identification	OrgId	1..1 {Or	Identification of a Legal Entity	
Identification +Organisation Identification ++Any BIC	AnyBIC	0..1	BIC as per ISO 9362	
Identification +Organisation Identification ++LEI	LEI	0..1	Legal Entity Identifier	
Identification +Organisation Identification ++Other	Othr	0..n	Other identification of a legal entity	
Identification +Organisation Identification ++Other +++Identification	Id	1..1	Identification	
Identification +Organisation Identification ++Other +++Scheme Name	SchmeNm	0..1	Identification Scheme Name	
Identification +Organisation Identification ++Other +++Scheme Name ++++Code	Cd	1..1 {Or	Identification Code	
Identification +Organisation Identification ++Other +++Scheme Name ++++Proprietary	Prtry	1..1 Or}	Proprietary Identification	
Identification +Organisation Identification ++Other +++Issuer	Issr	0..1	Identification Issuer	
Identification +Private Identification	PrvtId	1..1 Or}	Identification of a Natural Person	
Identification +Private Identification ++Date And Place Of Birth	DtAndPlcOfBirth	0..1	Date and Place of Birth	
Identification +Private Identification ++Date And Place Of Birth +++Birth Date	BirthDt	1..1	Date of Birth	
Identification +Private Identification ++Date And Place Of Birth +++Province Of Birth	PrvcOfBirth	0..1	Part of the country (e.g. canton, province, state)	

ISO 20022 Standard			Swiss Payment Standards	
Message Item	XML Tag	Mult	General Definition	Remark
Identification +Private Identification ++Date And Place Of Birth +++City Of Birth	CityOfBirth	1..1	City of Birth	
Identification +Private Identification ++Date And Place Of Birth +++Country Of Birth	CtryOfBirth	1..1	Country of Birth	
Identification +Private Identification ++Other	Othr	0..n	Other Identification of a Natural Person	
Identification +Private Identification ++Other +++Identification	Id	1..1	Identification	
Identification +Private Identification ++Other +++Scheme Name	SchmeNm	0..1	Identification Scheme Name	
Identification +Private Identification ++Other +++Scheme Name ++++Code	Cd	1..1	Identification Code	
Identification +Private Identification ++Other +++Scheme Name ++++Proprietary	Prtry	1..1	Proprietary Identification	
Identification +Private Identification ++Other +++Issuer	Issr	0..1	Identification Issuer	
Country Of Residence	CtryOfRes	0..1		
Contact Details	CtctDtls	0..1		

Table 12: Identification of other party data elements (generic)

3.14 References

For each credit transfer, various references or identifications ensure that the transaction can be uniquely identified at all stages.

A distinction is made between end-to-end references, which are valid along the entire transfer path from the debtor to the creditor, and point-to-point references, which are used only between the individual "Agents" (financial institutions) (transaction reference and "Instruction Identification").

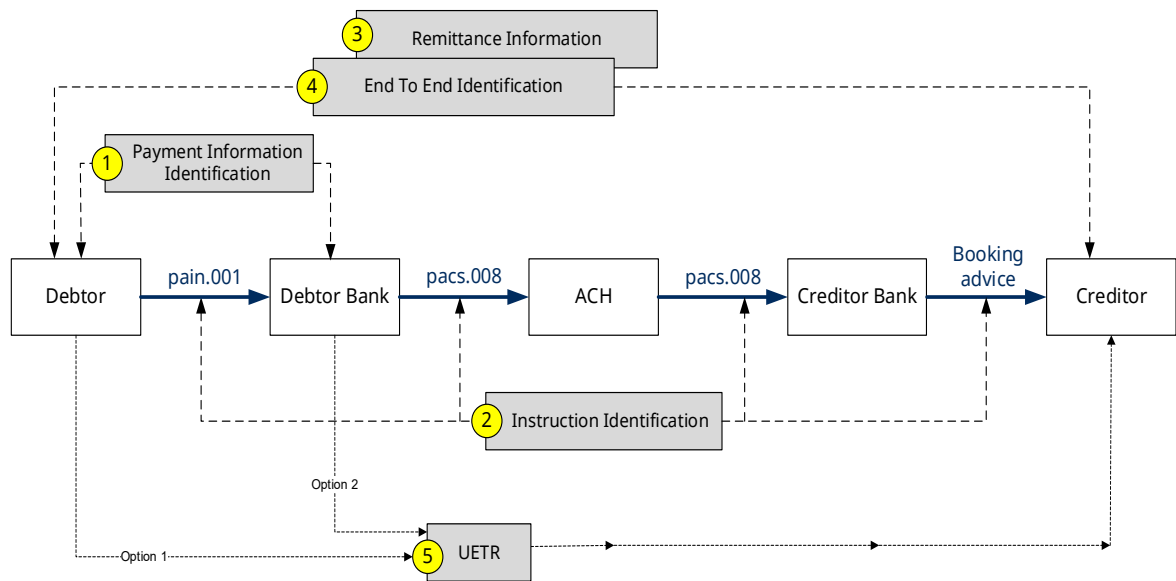


Figure 9: References

3.14.1 References in the processing chain

"Payment Information Identification" ①

This reference is assigned by the debtor's software and included in the "pain.001" message (at the B level). It is used to reference a group of payments (group of individual transactions with an identical debit account, preferred execution date, etc.).

"Instruction Identification" ②

This reference is unique between the sending and receiving parties (sequence number). It is reassigned by each party in the processing chain (in "pain.001" at the C level).

3.14.2 Customer references

In addition to the references listed above in the processing chain, a customer reference (creditor reference) can be included in the "Remittance Information" in structured or unstructured form.

Structured customer reference as "Remittance Information" ^③

The following types of structured references can be supplied in the element <CdtrRefInf/Ref>:

Use of the Swiss QR reference

In Switzerland, the QR reference allows creditors to automatically match their invoices with incoming payments. The QR reference is created as follows: 26 numeric digits (to be freely assigned by the customer) plus one character check digit. Use of the QR reference is only permitted and is required in connection with a QR-IBAN in the element "Creditor Account/IBAN".

Use of the ISO Creditor Reference

The ISO Creditor Reference (ISO 11649) allows creditors to automatically match their invoices with incoming payments.

Changing this reference is not allowed. It must contain the value "RF" in positions 1-2 and a correct check digit in positions 3-4 and may contain up to a maximum of 25 characters.

Note: For payment type "D" (domestic, payment in CHF and EUR; EUR until November 2027), the ISO creditor reference pursuant to ISO 11649 must be supplied when using the reference type code "SCOR". If, for payment types «S» and «X», the element Issuer of the reference type is supplied with the value «ISO» and the element Code of the reference type with the value «SCOR», the element <Ref> must then contain a formally correct «Creditor Reference» in accordance with ISO 11649.

Unstructured customer reference as "Remittance Information" ^③

Instead of the structured reference, a customer reference can also be provided in unstructured form, with a maximum length of 140 characters.

"End To End Identification" ^④

"End To End Identification" is used to uniquely identify a transaction and is assigned by the debtor. In contrast to the "Instruction Identification", the "End To End Identification" (e.g. the order number) is forwarded unchanged throughout the entire processing chain.

"UETR" ^⑤

The "UETR" is a globally unique reference that is either assigned by the debtor's software and included in the "pain.001" (option 1) or created by the debtor bank for forwarding the payment in interbank traffic (option 2). In the case of option 1, the UETR assigned by the debtor is forwarded unchanged to the interbank message if the financial institution offers this service.

3.15 Payment types

The basis for the definition of the following payment types is the definition of business cases in accordance with the *Swiss Business Rules* [6]. The definition covers all current possibilities of payment types in Switzerland (national, cross-border, SEPA, etc.).

For each "pain.001" transaction, the first step is to check which payment type this business case corresponds to (see *Swiss Business Rules* [6]). To identify the respective payment type, individual key elements are analysed.

Once the payment type has been identified, the data is validated against the specifications for this payment type in accordance with the *Swiss Implementation Guidelines* (this document).

Step 1: Assignment of the transaction to a payment type (or "Identification of the Payment Type").

The assignment to payment types can be made solely on the basis of the specifications marked in black below. Expressions marked in blue do not need to be checked for the allocation to the payment type alone. See also tables in chapter 2 "Business Cases" of the *Swiss Business Rules* [6].

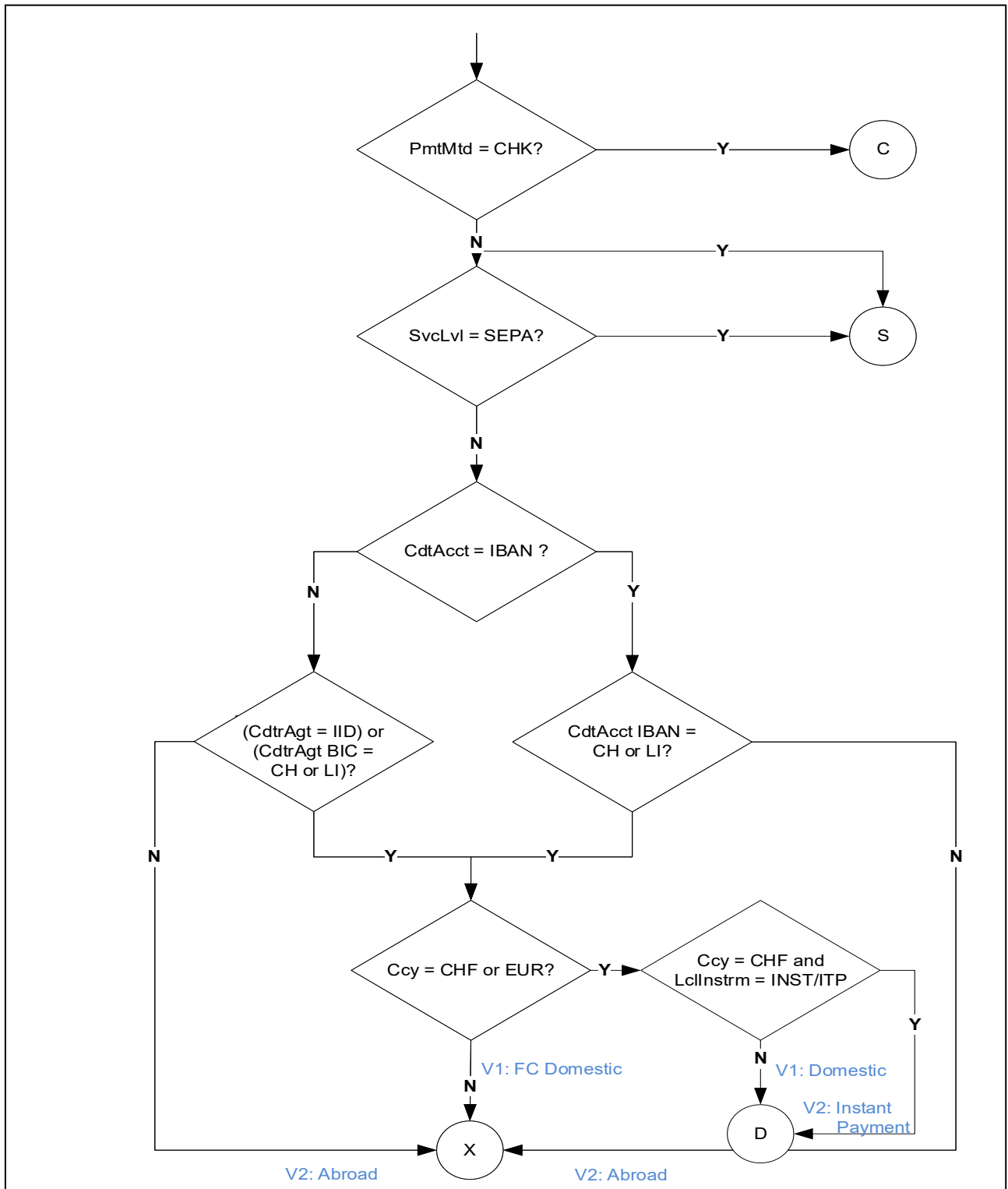


Figure 10: Determining the payment type

Step 2: Validation of the transaction according to the payment type

Once the payment type has been identified, all other elements are validated in accordance with the *Swiss Implementation Guidelines* (this document). Depending on the extent of the implemented logic, a discrepancy with the definitions in this document may result in the transaction being rejected or, in certain cases for individual institutions, in existing elements not provided for being ignored and the transaction being processed further.

Payment type	D	S	X	C
Title	Domestic	SEPA	Cross-border and foreign currency domestic	Bank check/ PostCash Domestic and cross-border
Comment	V1: Payment V2: Instant payment		V1: Foreign currency (FC) domestic V2: Cross-border	
Payment Method	TRF	TRF	TRF	CHK
Service level	SEPA not permitted	SEPA	SEPA not permitted	SEPA not permitted
Local instrument	V2: INST/ITP	INST/ITP		
Creditor account	V1: IBAN (QR IBAN) or account V2: IBAN (QR IBAN)	IBAN	IBAN or account	Must not be provided
Creditor agent	Financial institution Domestic (CH/LI or with SIC connection): if the account number is used instead of the IBAN*, it is mandatory to use either: a. IID or b. BICFI	BICFI (optional)	V1: Financial institution Domestic (CH/LI): if IBAN*, then agent optional a. BICFI (CH) b. IID (optional: FI name and address) c. FI name and address V2: Financial institution cross-border a. BICFI International b. Bank code* and FI name and address c. FI name and address	Must not be provided
Currency	V1: CHF/EUR (EUR until Nov. 2027) V2: CHF	EUR	V1: All except CHF/EUR (EUR from Nov. 2027) V2: All	all

Table 13: SPS payment types

* Optional when using an IBAN/QR-IBAN, as the creditor agent is then determined from IBAN/QR-IBAN

3.16 QR-Bill

An invoice can be designated as a "QR-bill" if it contains a payment part with a Swiss QR Code.

See *the Swiss Implementation Guidelines QR-bill* [7].

The Swiss QR Code contains the data required to trigger a payment using ISO 20022 "pain.001", payment type "D" or "S". The mapping of the Swiss QR Code data into a "pain.001" is described in *Annex B: Mapping the Swiss QR code in a QR-bill payment part into "pain.001"*.

The QR-IBAN is an account number that must be used to specify the account to be credited for payments with a QR reference. The formal structure of this IBAN corresponds to the rules in accordance with ISO 13616. The QR reference is a structured reference of the invoice issuer in the payment part of the QR-bill. The QR-IBAN and the QR reference are intended for billing in CHF. (The QR-IBAN and the QR reference can still be used for EUR until the discontinuation of euroSIC in November 2027).

In addition to the QR reference, the payment part of the QR-bill can also contain an ISO reference (in accordance with ISO 11649) as a "Structured Reference". The IBAN with an ISO reference is intended for billing in CHF and EUR with the QR-bill. (The combination of an IBAN with an ISO reference can also be used for other currencies outside the QR-bill).

The QR-bill can also be used with an IBAN and unstructured remittance information for billing in CHF and EUR.

3.17 Instant payments in Switzerland and Liechtenstein

Instant payments – payment type "D" V2 – in Switzerland can only be made in CHF and credited to an IBAN. The financial institutions can accept orders for instant payments with "pain.001" as part of their customer offering. Other limitations in the database are described in chapter 4.

Such orders are identified with the element "Local Instrument" with the code "INST". If an order cannot be executed as an instant payment, it is rejected and acknowledged with a corresponding Status Report (pain.002).

The financial institutions can also offer the option of executing an order rejected as an instant payment as a normal payment. Such orders are also identified with the element "Local Instrument" with the code "ITP". The financial institution can send a respective notification with a Status Report (pain.002) and the code "ACWC".

3.18 Forwarding and truncation of data elements

When forwarding SEPA payments (payment type "S"), the possibility of forwarding the data entered with SPS "pain.001" may be limited or not supported for some data elements.

This concerns, for example, the data element "UETR", which cannot be forwarded to SEPA (payment type "S"), or "Name" and the address data (<PstlAdr>), which may be subject to length restrictions.

4 Technical specifications

4.1 Group Header (GrpHdr, A level)

The "Group Header" (A level of the message) contains all elements that apply to all transactions in the XML message "Customer Credit Transfer Initiation" (pain.001). It appears exactly once in the message.

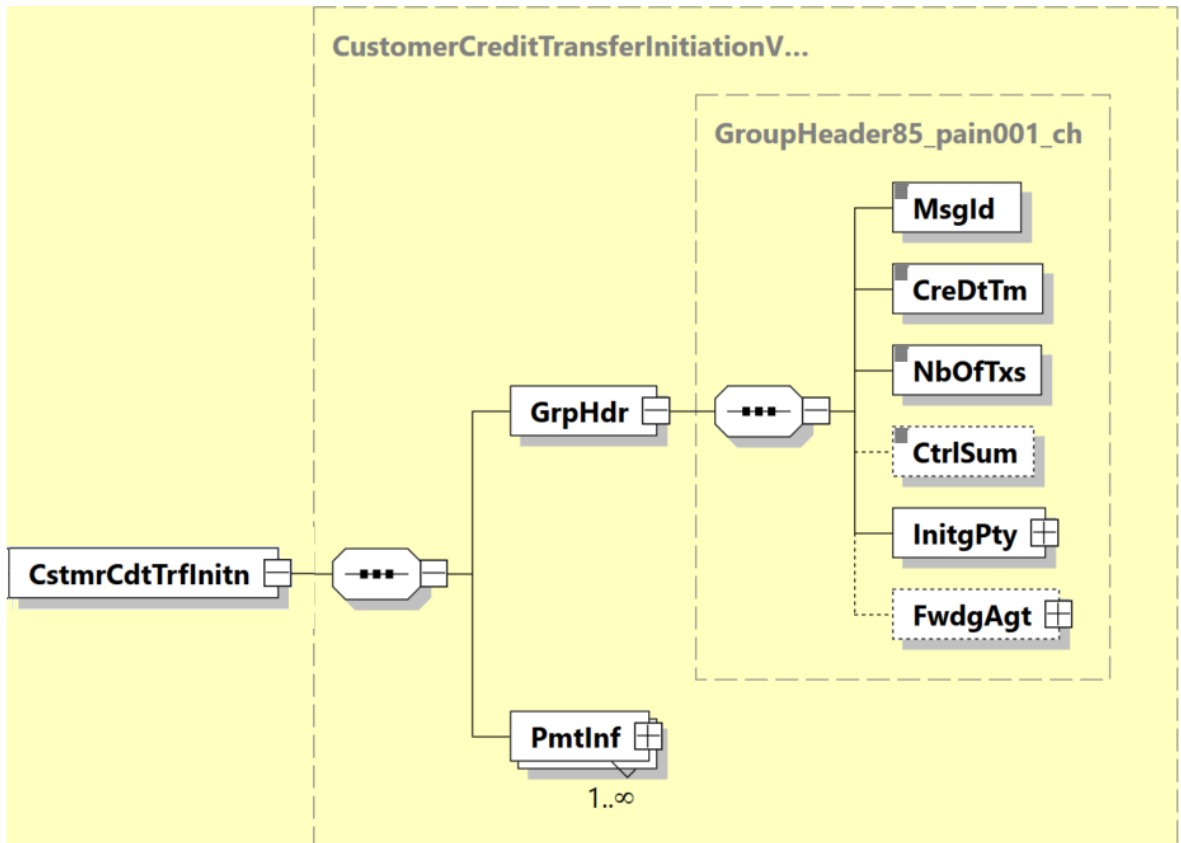


Figure 11: Group Header (GrpHdr)

The table below specifies all elements of the "Group Header" relevant for the Swiss Payment Standards.

ISO-20022-Standard			Swiss Payment Standards			
Message Item	XML Tag	Mult	St.	General Definition	Payment Type-Specific Definition	Error
Document +Customer Credit Transfer Initiation V09	CstmrCdtTrfInitn	1..1	M			
Group Header	GrpHdr	1..1	M			
Group Header +Message Identification	MsgId	1..1	M	<p>Checking for duplicates usually takes place at the Swiss financial institutions at the document (message) level. This is why the element "Message Identification" <MsgId> must have a unique value. The uniqueness is checked by most of the financial institutions over a period of at least 90 days. It is recommended that the "Message Identification" be generally kept unique for as long as possible.</p> <p>Only the restricted character set for reference elements is permitted for this element (see chapter 3.2).</p>		DU01, CH16
Group Header +Creation Date Time	CreDtTm	1..1	M	<p>Recommendation: Should be the same as the actual date/time of creation.</p>		DT01
Group Header +Number Of Transactions	NbOfTxs	1..1	M	<p>If there is an error, the whole message is rejected. Messages that exceed 99,999 payments (C-Level) will be rejected by the financial institutions. Depending on the financial institution, the size of the message that can be sent may be smaller.</p>		AM18
Group Header +Control Sum	CtrlSum	0..1	R	<p>Value is the same as the sum of all the "Amount elements" ("Instructed Amount" or "Equivalent Amount")</p> <p>If there is an error, the whole message is rejected.</p>		AM10
Group Header +Initiating Party	InitgPty	1..1	M	<p>At least one of the elements "Name" or "Identification" must be supplied.</p> <p>Describes the sending party. This can be the debtor or another appointed party acting as the sender of the message.</p>		CH21
Group Header +Initiating Party ++Name	Nm	0..1	R	<p>Recommendation: Use.</p> <p>Designation or name by which the sending party of the message is known or commonly used for its identification.</p>	S: max. 70 characters	CH16
Group Header +Initiating Party ++Identification	Id	0..1	R	<p>Use is recommended. Identification of the message sender.</p>		CH17

ISO-20022-Standard			Swiss Payment Standards			
Message Item	XML Tag	Mult	St.	General Definition	Payment Type-Specific Definition	Error
Group Header +Initiating Party ++Identification +++Organisation Identification	OrgId {Or	1..1	D	Only "AnyBIC" or an element from "Other" and optionally the element "LEI" are allowed.		CH16, CH17, CH21
Group Header +Initiating Party ++Identification +++Organisation Identification ++++Any BIC	AnyBIC	0..1	D	If used, "Other" must not be present.		RC01, CH16, CH17
Group Header +Initiating Party ++Identification +++Organisation Identification ++++LEI	LEI	0..1	O	The forwarding of the element cannot be guaranteed in all cases. May be supplied in addition to "AnyBIC" or "Othr".		
Group Header +Initiating Party ++Identification +++Organisation Identification ++++Other	Othr	0..n	D	If used, "AnyBIC" must not be present.		CH17
Group Header +Initiating Party ++Identification +++Private Identification	PrvtId Or}	1..1	D	Only "Date And Place Of Birth" or an element from "Other" is permitted.		CH16, CH17
Group Header +Initiating Party ++Contact Details	CtctDtls	0..1	R	The <Othr> sub-element is to be used for the details of the software used.		
Group Header +Initiating Party ++Contact Details +++Other	Othr	0..n	R	Use is recommended. Contains details of the Software and Implementation Guide used to create the message. Maximum 4 instances are allowed		CH21

ISO-20022-Standard			Swiss Payment Standards			
Message Item	XML Tag	Mult	St.	General Definition	Payment Type-Specific Definition	Error
Group Header +Initiating Party ++Contact Details +++Other ++++Channel Type	ChanlTp	1..1	M	4-character code to designate the type of information. The following codes are allowed: NAME - name of the software PRVD - name of the software provider VRSN - version of the software SPSV - version of the SPS IG		CH16
Group Header +Initiating Party ++Contact Details +++Other ++++Identification	Id	0..1	M	Textual information corresponding to the code in the element ChanlTp: For NAME, provide the name of the software. For PRVD, provide the name of the software provider For VRSN, provide the version number of the software For SPSV, provide the version of the SPS IG		
Group Header +Forwarding Agent	FwdgAgt	0..1	BD	The element is processed in accordance with the rules of the financial institution. For a general description of the sub-elements, see chapter 3.12 "Financial Institution Identification".		

Table 14: Group Header (GrpHdr, A-level)

4.2 Payment Information (PmtInf, B level)

The "Payment Information" (B level of the message) contains the debtor information as well as other key elements such as the payment method or the preferred execution date, which apply to all transactions (C level) of this B level.

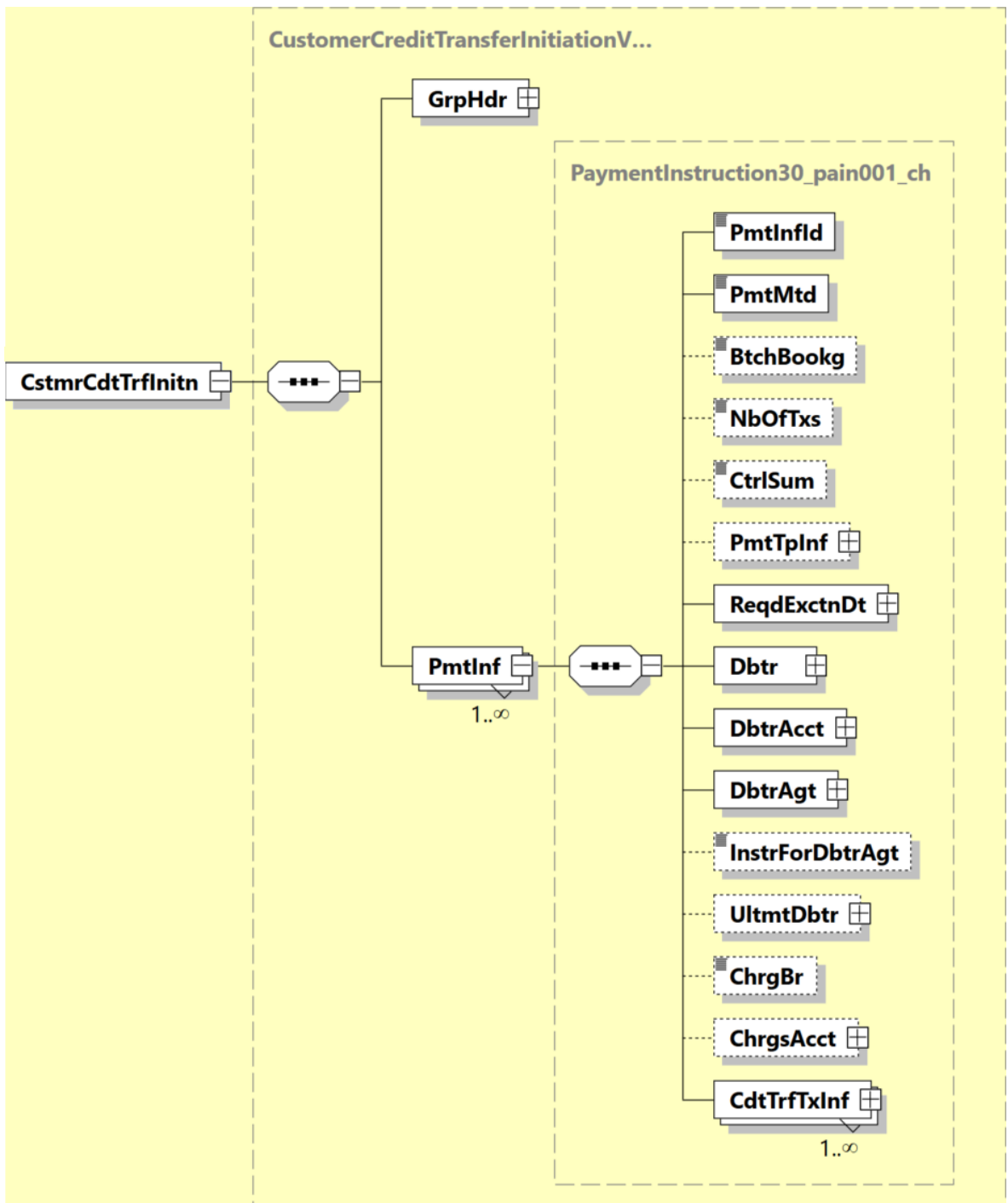


Figure 12: Payment information (PmtInf)

The table below specifies all elements of the "Payment Information" relevant for the Swiss Payment Standards.

ISO-20022-Standard			Swiss Payment Standards			
Message Item	XML Tag	Mult	St.	General Definition	Payment Type-Specific Definition	Error
Payment Information	PmtInf	1..n	M			
Payment Information +Payment Information Identification	PmtInfId	1..1	M	Value must be unique within the whole message (is used as reference in the Status Report "pain.002"). Only the restricted character set for reference elements is permitted for this element (see chapter 3.2).		DU02, CH16
Payment Information +Payment Method	PmtMtd	1..1	M	May only contain TRF	C: May only contain CHK	CH16
Payment Information +Batch Booking	BtchBookg	0..1	O	The option "true" is recommended. "true": Wherever possible, one batch booking is made per "Payment Information" (B). A separate B-level must be created for each currency being transferred. The booking is identified using the Payment Information Identification (B). "false": One booking should be made for each "Credit Transfer Transaction Information" (C). Bookings are usually identified by the "Payment Identification" (C). Alternatively, the financial institution can also identify the booking using, for example, the "Payment Information Identification" (B) element. The option "true" in combination with Category Purpose Code (B-Level) SALA and notification instruction CND/NOA results in a confidential payment. If this element is not sent, then the booking proceeds as for "true" or according to the master data stored at the financial institution.	D: V2: «true» and «empty» must only be used in agreement with the financial institution.	
Payment Information +Number Of Transactions	NbOfTxs	0..1	O	Not generally checked by Swiss institutions. Checking uses the corresponding element at the A-Level.		
Payment Information +Control Sum	CtrlSum	0..1	O	Not generally checked by Swiss institutions. Checking uses the corresponding element at the A-Level.		
Payment Information +Payment Type Information	PmtTpInf	0..1	O	Can be used at the B-Level or C-Level, but generally not in both at the same time. Some institutions permit it to be sent at both levels but not the same sub-element at both levels.		CH07
Payment Information +Payment Type Information ++Instruction Priority	InstrPrty	0..1	BD	This element is processed in accordance with the regulations of the finance institutions. For normal handling, the element can be removed. Any details about the Express processing (HIGH) are to be provided on the B-level, because values at the C-level are ignored.	S: The value provided is ignored	

ISO-20022-Standard			Swiss Payment Standards			
Message Item	XML Tag	Mult	St.	General Definition	Payment Type-Specific Definition	Error
Payment Information +Payment Type Information ++Service Level	SvcLvl	0..n	O	Service Level affects the way payment is made at the financial institution. The focus is on achieving the fastest possible credit for the creditor. May be provided exactly once.	S: Must be used	CH21
Payment Information +Payment Type Information ++Service Level +++Code	Cd {Or	1..1	BD	Codes according to "Payments External Code Lists" [8], if the financial institution offers the service in question, otherwise they are ignored.	S: Only SEPA permitted	CH16
Payment Information +Payment Type Information ++Service Level +++Proprietary	Prtry Or}	1..1	BD	The element is processed according to the rules of the financial institution.	S: Must not be provided	CH17
Payment Information +Payment Type Information ++Local Instrument	LclInstrm	0..1	BD		D: V2: Must be provided. D: Must not be provided	CH17
Payment Information +Payment Type Information ++Local Instrument +++Code	Cd {Or	1..1	BD	Codes according to "Payments External Code Lists" [8]. If used, then "Proprietary" must not be present.	D: V2: Must contain INST or ITP (ITP only in agreement with the financial institution). S: May contain INST or ITP (in consultation with the financial institution)	CH17
Payment Information +Payment Type Information ++Local Instrument +++Proprietary	Prtry Or}	1..1	BD	If used, then "Code" must not be present.	D: Must not be provided. S: Is ignored X: Is ignored	
Payment Information +Payment Type Information ++Category Purpose	CtgyPurp	0..1	O	Supplies information about the purpose of the payment order.		

ISO-20022-Standard			Swiss Payment Standards			
Message Item	XML Tag	Mult	St.	General Definition	Payment Type-Specific Definition	Error
Payment Information +Payment Type Information ++Category Purpose +++Code	Cd	1..1	M	Codes according to "Payments External Code Lists" [8]. The forwarding of the code to the receiving institution is subject to the offer of the customer's financial institution. If required, the code SALA or PENS must always be sent at the B-Level. The code SALA in combination with Batch Booking Option "true" and notification instruction CND/NOA results in a confidential payment. If supported by the financial institution, the code RRCT is used to mandate repayment based on prior receipt of the payment.		CH16
Payment Information +Requested Execution Date	ReqdExctnDt	1..1	M	Contains the required date of execution. Where appropriate, the value date is automatically modified to the next possible banking.		DT01, CH03, CH04, DT06
Payment Information +Requested Execution Date ++Date	Dt	1..1	D			
Payment Information +Requested Execution Date ++Date Time	DtTm	1..1	D	The element may be delivered only if the financial institution supports it.		
Payment Information +Debtor	Dbtr	1..1	M	The debtor is only identified by the "Debtor Account" element. Information in the "Debtor" field will be ignored. What is required is the master data for the financial institution for this debtor.		
Payment Information +Debtor ++Name	Nm	0..1	R	Usage is recommended.	S: max. 70 characters	
Payment Information +Debtor ++Postal Address	PstlAdr	0..1	O	For a general description of the sub-elements, see chapter 3.11 "Using address information"		
Payment Information +Debtor ++Postal Address +++Town Name	TwnNm	0..1	O	Must be used		CH21

ISO-20022-Standard			Swiss Payment Standards			
Message Item	XML Tag	Mult	St.	General Definition	Payment Type-Specific Definition	Error
Payment Information +Debtor ++Postal Address +++Country	Ctry	0..1	O	Must be used		CH21
Payment Information +Debtor ++Postal Address +++Address Line	AdrLine	0..7	O	Maximum 2 lines allowed. It is recommended to always supply structured address elements in place of this element.		
Payment Information +Debtor ++Identification	Id	0..1	O	Is currently ignored by financial institutions.		CH17
Payment Information +Debtor ++Identification +++Organisation Identification	OrgId	{Or}	1..1	D	Only "AnyBIC" or an element from "Other" and optionally the element "LEI" are allowed.	CH16, CH17, CH21
Payment Information +Debtor ++Identification +++Private Identification	PrvtId	Or}	1..1	D	Only "Date And Place Of Birth" or an element from "Other" are permitted.	CH16, CH17
Payment Information +Debtor Account	DbtrAcct	1..1	M	Recommendation: IBAN should be used. In addition, the debit advice can be determined in the "Type/Proprietary" element. When using the AOS "Additional participants" (multi-banking), the third-party bank account number must be specified here.		
Payment Information +Debtor Account ++Identification	Id	1..1	M			
Payment Information +Debtor Account ++Identification +++IBAN	IBAN	{Or}	1..1	R	Usage is recommended. Must not be a QR-IBAN.	BE09, CH16, AC01
Payment Information +Debtor Account ++Identification +++Other	Othr	Or}	1..1	D		CH17, CH21

ISO-20022-Standard			Swiss Payment Standards			
Message Item	XML Tag	Mult	St.	General Definition	Payment Type-Specific Definition	Error
Payment Information +Debtor Account ++Identification +++Other ++++Identification	Id	1..1	M	Proprietary account number. Must be used if "Other" is used.		CH16, AC01
Payment Information +Debtor Account ++Type	Tp	0..1	O			
Payment Information +Debtor Account ++Type +++Code	Cd	{Or 1..1	BD	The element is processed according to the rules of the financial institution.		
Payment Information +Debtor Account ++Type +++Proprietary	Prtry	Or} 1..1	D	Can be used to control the debit advice. The following options are available: <ul style="list-style-type: none"> • NOA No Advice • SIA Single Advice • CND Collective Advice No Details • CWD Collective Advice With Details The code CND/NOA in combination with Category Purpose Code (B-Level) SALA and Batch Booking Option "true" results in a confidential payment.		CH16
Payment Information +Debtor Account ++Currency	Ccy	0..1	O	Is currently ignored by financial institutions.		
Payment Information +Debtor Account ++Proxy	Prxy	0..1	BD	Is currently ignored by financial institutions.		
Payment Information +Debtor Account ++Proxy +++Type	Tp	0..1	O			

ISO-20022-Standard			Swiss Payment Standards			
Message Item	XML Tag	Mult	St.	General Definition	Payment Type-Specific Definition	Error
Payment Information +Debtor Agent	DbtrAgt	1..1	M	The Swiss financial institutions recommend entering the BIC or IID (institutional identification) in this element. When using the AOS "Additional participants" (multi-banking), the third-party bank must be specified here. For a general description of the sub-elements, see chapter 3.12 "Financial Institution Identification".		
Payment Information +Debtor Agent ++Financial Institution Identification	FinInstnId	1..1	M			
Payment Information +Debtor Agent ++Financial Institution Identification +++BICFI	BICFI	0..1	D	BIC of the debtor's financial institution If used, then "Clearing System Member Identification" must not be present.		RC01, AGNT, CH21
Payment Information +Debtor Agent ++Financial Institution Identification +++Clearing System Member Identification	ClrSysMmbId	0..1	D	If used, then BICFI must not be present.		CH21
Payment Information +Debtor Agent ++Financial Institution Identification +++Clearing System Member Identification ++++Clearing System Identification	ClrSysId	0..1	M	Must be used when "Clearing System Member Identification" is used.		
Payment Information +Debtor Agent ++Financial Institution Identification +++Clearing System Member Identification ++++Clearing System Identification +++++Code	Cd	1..1	M	Codes according to "Payments External Code Lists" [8]. Only CHBCC is permitted in Switzerland.		CH16

ISO-20022-Standard			Swiss Payment Standards			
Message Item	XML Tag	Mult	St.	General Definition	Payment Type-Specific Definition	Error
Payment Information +Debtor Agent ++Financial Institution Identification +++Clearing System Member Identification ++++Member Identification	MmbId	1..1	M	IID of the debtor's financial institution Must be used if "Clearing System Member Identification" is used.		RC01, AGNT
Payment Information +Debtor Agent ++Financial Institution Identification +++LEI	LEI	0..1	O	May be supplied in addition to "BICFI" or "Othr". The element is ignored and not forwarded.		
Payment Information +Instruction For Debtor Agent	InstrForDbtrAgt	0..1	BD	The element is processed according to the rules of the financial institution.	S: Not allowed.	
Payment Information +Ultimate Debtor	UltmtDbtr	0..1	O	Ultimate debtor. Can be used at the B-Level or C-Level but not both at the same time.		CH07
Payment Information +Ultimate Debtor ++Name	Nm	0..1	O	Must be used if Postal Address is used	S: max. 70 characters	CH16
Payment Information +Ultimate Debtor ++Postal Address	PstlAdr	0..1	O	For a general description of the sub-elements, see chapter 3.11 "Using address information".	S: Not forwarded in interbank traffic	
Payment Information +Ultimate Debtor ++Postal Address +++Town Name	TwnNm	0..1	R	Must be used		CH21
Payment Information +Ultimate Debtor ++Postal Address +++Country	Ctry	0..1	R	Must be used		CH21
Payment Information +Ultimate Debtor ++Postal Address +++Address Line	AdrLine	0..7	BD	Maximum 2 lines allowed if offered as part of the hybrid address.		

ISO-20022-Standard			Swiss Payment Standards			
Message Item	XML Tag	Mult	St.	General Definition	Payment Type-Specific Definition	Error
Payment Information +Ultimate Debtor ++Identification	Id	0..1	O			CH17
Payment Information +Ultimate Debtor ++Identification +++Organisation Identification	OrgId	{Or 1..1	D	Only "AnyBIC" or an element from "Other" and optionally the element "LEI" are allowed.	<p>D: Alle Angaben werden weitergeleitet. D: All information will be forwarded. D: Toutes les informations seront transmises. S: Werden mehrere Elemente geliefert, wird nur eines der Elemente weitergeleitet mit folgender Priorität: 1. Prio AnyBIC, 2.Prio LEI, 3. Prio Other</p> <p>S: If multiple elements are delivered, only one of the elements will be forwarded with the following priority: 1. Priority AnyBIC, 2. Priority LEI, 3. Priority Other</p> <p>S: Si plusieurs éléments sont livrés, un seul des éléments sera transmis avec la priorité suivante : 1. Prio AnyBIC, 2. Prio LEI, 3. Prio Autre</p> <p>X: Bei gleichzeitiger Verwendung von Name/ Adresse und AnyBIC, wird nur AnyBIC weitergeleitet.</p> <p>X: When using Name/Address and AnyBIC simultaneously, only AnyBIC will be forwarded.</p> <p>X: En cas d'utilisation simultanée du nom/ adresse et de l'AnyBIC, seul l'AnyBIC sera transmis.</p>	CH16, CH17, CH21
Payment Information +Ultimate Debtor ++Identification +++Organisation Identification ++++Any BIC	AnyBIC	0..1	O			RC01, CH16, CH17
Payment Information +Ultimate Debtor ++Identification +++Organisation Identification ++++LEI	LEI	0..1	O O	May be supplied in addition to "AnyBIC" or "Othr",		

ISO-20022-Standard			Swiss Payment Standards			
Message Item	XML Tag	Mult	St.	General Definition	Payment Type-Specific Definition	Error
Payment Information +Ultimate Debtor ++Identification +++Organisation Identification ++++Other	Othr	0..n	O			CH17
Payment Information +Ultimate Debtor ++Identification +++Private Identification	PrvtId Or}	1..1	D	Only "Date And Place Of Birth" or an element from "Other" permitted.		CH16, CH17
Payment Information +Charge Bearer	ChrgBr	0..1	D	Can be used at the B-Level or C-Level but not both at the same time. Permitted codes are: • DEBT Borne by Debtor (ex OUR) • CRED Borne by Creditor (ex BEN) • SHAR Shared (ex. SHA) • SLEV Service Level	S: If used, then SLEV or SHAR must be used. It can also be omitted.	CH16
Payment Information +Charges Account	ChrgsAcct	0..1	BD	Usually not used (any fees in this case are usually debited to the "Debtor Account").		
Payment Information +Charges Account ++Identification	Id	1..1	M	Must be used if "Charges Account" is used.		CH21
Payment Information +Charges Account ++Identification +++IBAN	IBAN {Or	1..1	R	Use of IBAN recommended.		AC01
Payment Information +Charges Account ++Identification +++Other	Othr Or}	1..1	D			
Payment Information +Charges Account ++Identification +++Other ++++Identification	Id	1..1	M	Proprietary account number.		AC01

ISO-20022-Standard			Swiss Payment Standards			
Message Item	XML Tag	Mult	St.	General Definition	Payment Type-Specific Definition	Error
Payment Information +Charges Account ++Currency	Ccy	0..1	O	Is currently ignored by financial institutions.		
Payment Information +Charges Account ++Proxy	Prxy	0..1	BD	May be supplied in addition to "Id". The element is ignored and not forwarded.		
Payment Information +Charges Account ++Proxy +++Type	Tp	0..1	O			

Table 15: Payment information (PmtInf, B level)

4.3 Credit Transfer Transaction Information (CdtTrfTxInf, C level)

The "Credit Transfer Transaction Information" (C level of the message) contains all creditor information as well as further information on the transaction (transmission information, payment purpose, etc.).

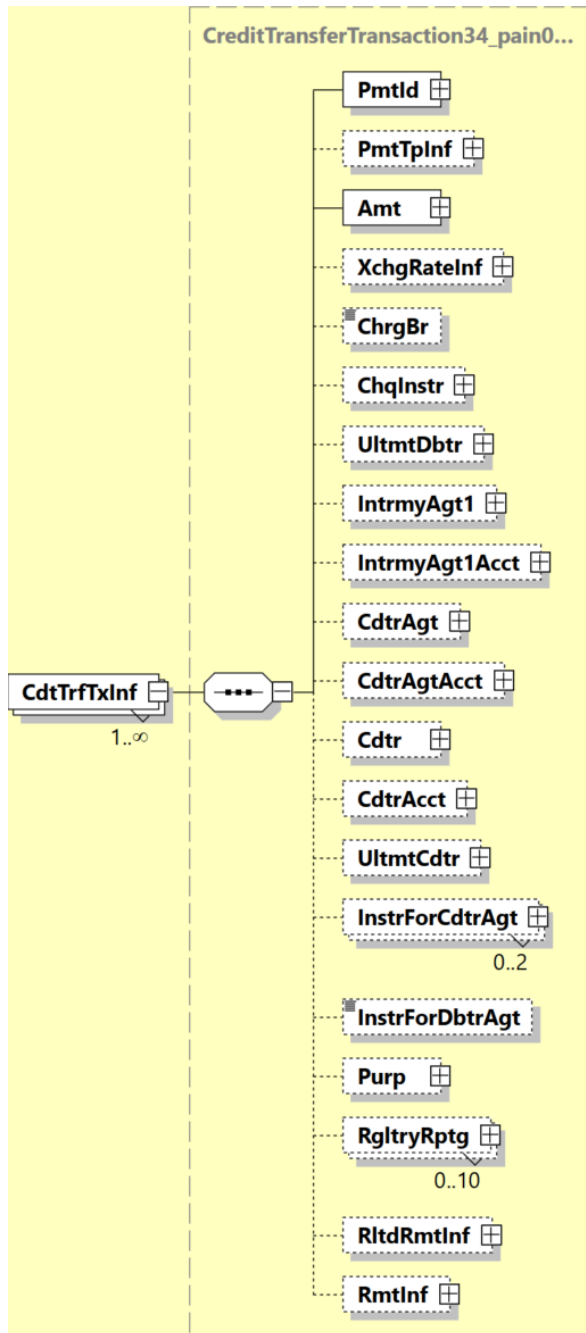


Figure 13: Credit transfer transaction information (CdtTrfTxInf)

The table below specifies all elements of the "Credit Transfer Transaction Information" relevant for the Swiss Payment Standards.

ISO-20022-Standard			Swiss Payment Standards			
Message Item	XML Tag	Mult	St.	General Definition	Payment Type-Specific Definition	Error
Credit Transfer Transaction Information	CdtTrfTxInf	1..n	M			CH21
Credit Transfer Transaction Information +Payment Identification	PmtId	1..1	M			
Credit Transfer Transaction Information +Payment Identification ++Instruction Identification	InstrId	0..1	R	Recommendation: Should be used and must be unique within the B-level. Only the restricted character set for reference elements is permitted for this element (see chapter 3.2).		DU05, CH16
Credit Transfer Transaction Information +Payment Identification ++End To End Identification	EndToEndId	1..1	M	Customer reference, normally forwarded as far as the beneficiary. Only the restricted character set for reference elements is permitted for this element (see chapter 3.2).		CH16
Credit Transfer Transaction Information +Payment Identification ++UETR	UETR	0..1	BD	If present, the element will be forwarded.	S: Not forwarded in interbank traffic	
Credit Transfer Transaction Information +Payment Type Information	PmtTpInf	0..1	D	Can be used at the B-level or C-level, but normally not both at the same time. Some institutions permit it to be sent at both levels but not the same sub-element at both levels.		CH21
Credit Transfer Transaction Information +Payment Type Information ++Instruction Priority	InstrPrty	0..1	O	Any information about the Express processing should be sent at the B-level because values in this element are ignored.		
Credit Transfer Transaction Information +Payment Type Information ++Service Level	SvcLvl	0..n	O	Service Level affects the way the payment is made at the financial institution. The focus is on achieving the fastest possible credit for the creditor. May be used exactly once.	S: Must be used	CH21
Credit Transfer Transaction Information +Payment Type Information ++Service Level +++Code	Cd	1..1	BD	Codes pursuant to "Payments External Code Lists" [8], if the financial institution offers the corresponding service, otherwise ignored.	S: Only SEPA allowed	CH16
Credit Transfer Transaction Information +Payment Type Information ++Service Level +++Proprietary	Prtry	1..1	BD	The element is processed in accordance with the rules of the financial institution.	S: Must not be provided.	CH17
Credit Transfer Transaction Information +Payment Type Information ++Local Instrument	LclInstrm	0..1	BD		D: V1 and V2 must not be provided.	CH17

ISO-20022-Standard			Swiss Payment Standards			
Message Item	XML Tag	Mult	St.	General Definition	Payment Type-Specific Definition	Error
Credit Transfer Transaction Information +Payment Type Information ++Category Purpose	CtgyPurp	0..1	O	Any details of SALA/PENS should be sent at the B-level. Other ISO codes may be supported by agreement with the financial institution.		
Credit Transfer Transaction Information +Payment Type Information ++Category Purpose +++Code	Cd	{Or} 1..1	D			
Credit Transfer Transaction Information +Payment Type Information ++Category Purpose +++Proprietary	Prtry	Or} 1..1	D			
Credit Transfer Transaction Information +Amount	Amt	1..1	M	Either as "Instructed Amount" or "Equivalent Amount". For each currency transferred, one B-level must be created.		
Credit Transfer Transaction Information +Amount ++Instructed Amount	InstdAmt	{Or} 1..1	D		D: V1: May only contain CHF or EUR (EUR until Nov. 2027), the amount must be between 0.01 and 9,999,999,999.99. V2: May only contain CHF, the amount must be between 0.01 and the instant payment limit. S: May only contain EUR, the amount must be between 0.01 and 999,999,999.99. X: (V1, domestic) - All currencies (after agreement with financial institution) except CHF and EUR (EUR from Nov. 2027) allowed. (V2, foreign) - All currencies (after agreement with financial institution) allowed.	AM01, AM02, CURR, AM03, CH20
Credit Transfer Transaction Information +Amount ++Equivalent Amount	EqvtAmt	Or} 1..1	BD	The element is processed pursuant to the rules of the financial institution.		CH21

ISO-20022-Standard			Swiss Payment Standards			
Message Item	XML Tag	Mult	St.	General Definition	Payment Type-Specific Definition	Error
Credit Transfer Transaction Information +Amount ++Equivalent Amount +++Amount	Amt	1..1	M	Must be used if "Equivalent Amount" is used.	D: V1: May only contain CHF or EUR (EUR until Nov. 2027), the amount must be between 0.01 and 9,999,999,999.99. V2: The amount must be between 0.01 and the instant payment limit. S: The amount must be between 0.01 and 999,999.99.	AM01, AM02, CURR, AM03, CH20
Credit Transfer Transaction Information +Amount ++Equivalent Amount +++Currency Of Transfer	CcyOfTrf	1..1	M	Must be used if "Equivalent Amount" is used.	D: V1: May only contain CHF or EUR (EUR until Nov. 2027). V2: May only contain CHF. S: May only contain EUR. X: (V1, domestic) - All currencies (after agreement with the financial institution) except CHF and EUR (EUR from Nov. 2027) allowed. (V2, foreign) - All currencies (after agreement with the financial institution) allowed.	CURR, AM03
Credit Transfer Transaction Information +Exchange Rate Information	XchgRateInf	0..1	BD	The element is processed pursuant to the rules of the financial institution.	S: Must not be provided.	CH17, CH21
Credit Transfer Transaction Information +Exchange Rate Information ++Unit Currency	UnitCcy	0..1	O	Currency in which the exchange ratio is specified. For example, if 1 CHF = xxx CUR, this is the currency CHF.		CURR
Credit Transfer Transaction Information +Exchange Rate Information ++Exchange Rate	XchgRate	0..1	O	Must be used if "Exchange Rate Information" is used. Exchange rates can always be supplied in currency unit 1 or in the usual custom of the financial sector (e.g. in currency unit 1 for EUR, USD, GBP or in currency unit 100 for YEN, DKK, SEK).		
Credit Transfer Transaction Information +Exchange Rate Information ++Rate Type	RateTp	0..1	O	Is currently ignored by the financial institutions.		
Credit Transfer Transaction Information +Exchange Rate Information ++Contract Identification	CtrctId	0..1	O	Is currently ignored by the financial institutions.		

ISO-20022-Standard			Swiss Payment Standards			
Message Item	XML Tag	Mult	St.	General Definition	Payment Type-Specific Definition	Error
Credit Transfer Transaction Information +Charge Bearer	ChrgBr	0..1	O	Can be used at the B-Level or C-Level but not both at the same time. Permitted codes are: <ul style="list-style-type: none"> • DEBT Borne by Debtor (ex OUR) • CRED Borne by Creditor (ex BEN) • SHAR Shared (ex. SHA) • SLEV Service Level 	If used, then SLEV or SHAR must be used. It can also be omitted.	CH07, CH16
Credit Transfer Transaction Information +Cheque Instruction	ChqInstr	0..1	D	May only be used in combination with "PmtMtd" = CHK.	S: Must not be provided. D: Must not be provided. X: Must not be provided.	CH17
Credit Transfer Transaction Information +Cheque Instruction ++Cheque Type	ChqTp	0..1	O			
Credit Transfer Transaction Information +Cheque Instruction ++Delivery Method	DlvryMtd	0..1	O			
Credit Transfer Transaction Information +Ultimate Debtor	UltmtDbtr	0..1	O	Ultimate debtor Can be used at the B-Level or C-Level but not both at the same time.		CH07, CH21
Credit Transfer Transaction Information +Ultimate Debtor ++Name	Nm	0..1	O	Must be used if Postal Address is used.	S: max. 70 characters	CH16
Credit Transfer Transaction Information +Ultimate Debtor ++Postal Address	PstlAdr	0..1	O	For a general description of the sub-elements, see chapter 3.11 "Using address information".	S: Not forwarded in interbank traffic	
Credit Transfer Transaction Information +Ultimate Debtor ++Postal Address +++Street Name	StrtNm	0..1	R	Use is recommended		
Credit Transfer Transaction Information +Ultimate Debtor ++Postal Address +++Town Name	TwnNm	0..1	R	Must be used.		CH21

ISO-20022-Standard			Swiss Payment Standards			
Message Item	XML Tag	Mult	St.	General Definition	Payment Type-Specific Definition	Error
Credit Transfer Transaction Information +Ultimate Debtor ++Postal Address +++Country	Ctry	0..1	R	Must be used.		CH21
Credit Transfer Transaction Information +Ultimate Debtor ++Postal Address +++Address Line	AdrLine	0..7	BD	Maximum of 2 lines allowed if offered as part of the hybrid address.		CH17
Credit Transfer Transaction Information +Ultimate Debtor ++Identification	Id	0..1	O			CH17
Credit Transfer Transaction Information +Ultimate Debtor ++Identification +++Organisation Identification	OrgId {Or	1..1	D	Only "AnyBIC" or an element from "Other" and optionally the element "LEI" are allowed.	D: All information will be forwarded. S: If several elements are delivered, only one of the elements is forwarded with the following priority: 1. prio AnyBIC, 2. prio LEI, 3. prio Other X: If name/address and AnyBIC are used at the same time, only AnyBIC will be forwarded.	CH16, CH17, CH21
Credit Transfer Transaction Information +Ultimate Debtor ++Identification +++Organisation Identification ++++Any BIC	AnyBIC	0..1	O			RC01, CH16, CH17
Credit Transfer Transaction Information +Ultimate Debtor ++Identification +++Organisation Identification ++++LEI	LEI	0..1	O	The forwarding of the element cannot be guaranteed in all cases. May be supplied in addition to "AnyBIC" or "Othr".		
Credit Transfer Transaction Information +Ultimate Debtor ++Identification +++Organisation Identification ++++Other	Othr	0..n	O			

ISO-20022-Standard			Swiss Payment Standards			
Message Item	XML Tag	Mult	St.	General Definition	Payment Type-Specific Definition	Error
Credit Transfer Transaction Information +Ultimate Debtor ++Identification +++Private Identification	PrvtId Or}	1..1	D	Only "Date And Place Of Birth" or an element from "Other" permitted.		CH16, CH17
Credit Transfer Transaction Information +Intermediary Agent 1	IntrmyAgt1	0..1	BD	The element is processed pursuant to the rules of the financial institution. For a general description of the sub-elements, see chapter 3.12 "Financial Institution Identification".		RC01
Credit Transfer Transaction Information +Intermediary Agent 1Account	IntrmyAgt1Acct	0..1	BD	The element is processed pursuant to the rules of the financial institution.		CH21
Credit Transfer Transaction Information +Intermediary Agent 1Account ++Identification	Id	1..1	M	Recommendation: Whenever possible the IBAN should be used.		
Credit Transfer Transaction Information +Intermediary Agent 1Account ++Identification +++IBAN	IBAN {Or	1..1	BD			
Credit Transfer Transaction Information +Intermediary Agent 1Account ++Identification +++Other	Othr Or}	1..1	BD			
Credit Transfer Transaction Information +Intermediary Agent 1Account ++Identification +++Other ++++Identification	Id	1..1	M			
Credit Transfer Transaction Information +Intermediary Agent 1Account ++Identification +++Other ++++Scheme Name	SchmeNm	0..1	BD	The element is processed pursuant to the rules of the financial institution.		

ISO-20022-Standard			Swiss Payment Standards			
Message Item	XML Tag	Mult	St.	General Definition	Payment Type-Specific Definition	Error
Credit Transfer Transaction Information +Intermediary Agent 1Account ++Identification +++Other ++++Issuer	Issr	0..1	BD	The element is processed pursuant to the rules of the financial institution.		
Credit Transfer Transaction Information +Creditor Agent	CdtrAgt	0..1	D	For a general description of the sub-elements, see chapter 3.12 "Identification of financial institutions".	D: The Creditor Agent can be omitted if the IBAN/QR-IBAN (CH/LI) is provided in the Creditor Account. If both the IBAN/QR-IBAN and an IID or a BIC are provided, the Creditor Agent is determined from the IBAN during payment execution. C: Must not be provided. S: The indication of the Creditor Agent is optional. The Creditor Agent is always determined from the IBAN. X: The Creditor Agent can be omitted if the IBAN (CH/LI) is provided in the Creditor Account. If both the IBAN and an IID or a BIC are provided, the Creditor Agent is determined from the IBAN during payment execution.	CH17, CH21
Credit Transfer Transaction Information +Creditor Agent ++Financial Institution Identification	FinInstnId	1..1	M		D: If supplied, IID or domestic BIC (CH/LI) X: (V1, domestic) - If supplied, IID or domestic BIC (CH/LI) (V2, foreign) - BIC recommended	
Credit Transfer Transaction Information +Creditor Agent ++Financial Institution Identification +++BICFI	BICFI	0..1	D	If used, then "Clearing System Member Identification" must not be present.	D: BIC (bank with SIC connection) X: (V1, domestic) - Domestic BIC (CH/LI)	AGNT, CH17
Credit Transfer Transaction Information +Creditor Agent ++Financial Institution Identification +++Clearing System Member Identification	ClrSysMmbId	0..1	D	If used, then "BICFI" must not be present.	S: Must not be provided. X: (V2, foreign) - Must be supplied together with Name and Address	CH17, CH21

ISO-20022-Standard			Swiss Payment Standards			
Message Item	XML Tag	Mult	St.	General Definition	Payment Type-Specific Definition	Error
Credit Transfer Transaction Information +Creditor Agent ++Financial Institution Identification +++Clearing System Member Identification ++++Clearing System Identification	ClrSysId	0..1	M	Must be used if "Clearing System Member Identification" is used.		
Credit Transfer Transaction Information +Creditor Agent ++Financial Institution Identification +++Clearing System Member Identification ++++Clearing System Identification +++++Code	Cd	1..1	M	Type of Clearing ID (Bank Code, "National Identifier"). Gives information about the type of identification in the "Member Identification" field. Codes pursuant to "Payments External Code Lists" [8].	D: Must contain CHBCC X: (V1, domestic) - Must contain CHBCC (V2, foreign) - Code CHBCC must not be used.	CH16
Credit Transfer Transaction Information +Creditor Agent ++Financial Institution Identification +++Clearing System Member Identification ++++Member Identification	MmbId	1..1	M	Clearing ID (Bank Code, "National Identifier") of the receiver institution. Must be used if "Clearing System Member Identification" is used.	X: (V1, domestic) - When executing the payment, the Creditor Agent is always determined from the IBAN (CH/LI), if available. D: When executing the payment, the Creditor Agent is always determined from the IBAN/QR-IBAN (CH/LI), if available.	AGNT
Credit Transfer Transaction Information +Creditor Agent ++Financial Institution Identification +++LEI	LEI	0..1	O	The forwarding of the element cannot be guaranteed in all cases. May be supplied in addition to "BICFI" or "Othr". The element is ignored and not forwarded.		
Credit Transfer Transaction Information +Creditor Agent ++Financial Institution Identification +++Name	Nm	0..1	D	Must not be supplied together with BIC.	X: (V2, foreign): Must be used if ClrSysMmbId is used. Must be supplied together with the Address. D: Must not be provided. S: Must not be provided. C: Must not be provided.	CH17, CH21, CH16

ISO-20022-Standard			Swiss Payment Standards			
Message Item	XML Tag	Mult	St.	General Definition	Payment Type-Specific Definition	Error
Credit Transfer Transaction Information +Creditor Agent ++Financial Institution Identification +++Postal Address	PstAdr	0..1	D	For a general description of the sub-elements, see chapter 3.11 "Using address information"	C: Must not be provided. S: Must not be provided. D: Must not be provided. X: Must be supplied when <Name> is used	CH17, CH21
Credit Transfer Transaction Information +Creditor Agent ++Financial Institution Identification +++Postal Address ++++Town Name	TwnNm	0..1	M	Must be used.		CH21
Credit Transfer Transaction Information +Creditor Agent ++Financial Institution Identification +++Postal Address ++++Country	Ctry	0..1	M	Use is recommended.		AG06
Credit Transfer Transaction Information +Creditor Agent ++Financial Institution Identification +++Postal Address ++++Address Line	AdrLine	0..7	BD	Maximum of 2 lines allowed if offered as part of the hybrid address.		
Credit Transfer Transaction Information +Creditor Agent ++Financial Institution Identification +++Other	Othr	0..1	N			
Credit Transfer Transaction Information +Creditor Agent Account	CdtrAgtAcct	0..1	BD	The element is processed pursuant to the rules of the financial institution.		CH21
Credit Transfer Transaction Information +Creditor Agent Account ++Identification	Id	1..1	M	Recommendation: IBAN should be used whenever possible.		
Credit Transfer Transaction Information +Creditor Agent Account ++Identification +++IBAN	IBAN {Or	1..1	D			

ISO-20022-Standard			Swiss Payment Standards			
Message Item	XML Tag	Mult	St.	General Definition	Payment Type-Specific Definition	Error
Credit Transfer Transaction Information +Creditor Agent Account ++Identification +++Other	Othr Or}	1..1	D			
Credit Transfer Transaction Information +Creditor	Cdtr	0..1	M	Must be supplied.		CH21
Credit Transfer Transaction Information +Creditor ++Name	Nm	0..1	M	Must be used if Postal Address is used.	S: max. 70 characters	CH16
Credit Transfer Transaction Information +Creditor ++Postal Address	PstlAdr	0..1	O	For a general description of the sub-elements, see chapter 3.11 "Using address information"		CH16
Credit Transfer Transaction Information +Creditor ++Postal Address +++Department	Dept	0..1	O			
Credit Transfer Transaction Information +Creditor ++Postal Address +++Sub Department	SubDept	0..1	O			
Credit Transfer Transaction Information +Creditor ++Postal Address +++Street Name	StrtNm	0..1	R	Use is recommended.		
Credit Transfer Transaction Information +Creditor ++Postal Address +++Building Number	BldgNb	0..1	R	Use is recommended.		
Credit Transfer Transaction Information +Creditor ++Postal Address +++Building Name	BldgNm	0..1	O			

ISO-20022-Standard			Swiss Payment Standards			
Message Item	XML Tag	Mult	St.	General Definition	Payment Type-Specific Definition	Error
Credit Transfer Transaction Information +Creditor ++Postal Address +++Floor	Flr	0..1	O			
Credit Transfer Transaction Information +Creditor ++Postal Address +++Post Box	PstBx	0..1	O			
Credit Transfer Transaction Information +Creditor ++Postal Address +++Room	Room	0..1	O			
Credit Transfer Transaction Information +Creditor ++Postal Address +++Post Code	PstCd	0..1	R	Use is recommended.	C: Must be provided	CH21
Credit Transfer Transaction Information +Creditor ++Postal Address +++Town Name	TwnNm	0..1	R	Must be used.		CH21
Credit Transfer Transaction Information +Creditor ++Postal Address +++Town Location Name	TwnLctnNm	0..1	O			
Credit Transfer Transaction Information +Creditor ++Postal Address +++District Name	DstrctNm	0..1	O			
Credit Transfer Transaction Information +Creditor ++Postal Address +++Country Sub Division	CtrySubDvsn	0..1	O			

ISO-20022-Standard			Swiss Payment Standards			
Message Item	XML Tag	Mult	St.	General Definition	Payment Type-Specific Definition	Error
Credit Transfer Transaction Information +Creditor ++Postal Address +++Country	Ctry	0..1	R	Must be used.		CH21, BE09
Credit Transfer Transaction Information +Creditor ++Postal Address +++Address Line	AdrLine	0..7	BD	Maximum of 2 lines allowed if offered as part of the hybrid address.		CH17
Credit Transfer Transaction Information +Creditor ++Identification	Id	0..1	D		C: Must not be present	CH17
Credit Transfer Transaction Information +Creditor ++Identification +++Organisation Identification	OrgId {Or	1..1	D	Only "AnyBIC" or an element from "Other" and optionally the element "LEI" are allowed.	S: Either "AnyBIC" or "LEI" or an element from "Other" permitted. X: If name/address and OrgID/AnyBIC are used at the same time, only <AnyBIC> is forwarded.	CH16, CH17, CH21
Credit Transfer Transaction Information +Creditor ++Identification +++Organisation Identification ++++Any BIC	AnyBIC	0..1	O			
Credit Transfer Transaction Information +Creditor ++Identification +++Organisation Identification ++++LEI	LEI	0..1	O	The forwarding of the element cannot be guaranteed in all cases. May be supplied in addition to "AnyBIC" or "Othr".		
Credit Transfer Transaction Information +Creditor ++Identification +++Organisation Identification ++++Other	Othr	0..n	O			
Credit Transfer Transaction Information +Creditor ++Identification +++Private Identification	PrvtId Or}	1..1	D	Either the element "Date And Place Of Birth" or an element from "Other" may be used.		CH16, CH17

ISO-20022-Standard			Swiss Payment Standards			
Message Item	XML Tag	Mult	St.	General Definition	Payment Type-Specific Definition	Error
Credit Transfer Transaction Information +Creditor Account	CdtrAcct	0..1	D	Must be provided.	C: Must not be provided.	CH17, CH21
Credit Transfer Transaction Information +Creditor Account ++Identification	Id	1..1	M	Recommendation: Whenever possible the IBAN should be used. Must be used if "Creditor Account" is used.		CH21
Credit Transfer Transaction Information +Creditor Account ++Identification +++IBAN	IBAN	1..1	D	Use is recommended.	D: V1: If used, either an IBAN or QR-IBAN (CH/LI) must be provided. D: V2: Must be used. S: Must be used.	AC01, CH21, BE09, CH16
	{Or					
Credit Transfer Transaction Information +Creditor Account ++Identification +++Other	Othr	1..1	D		D: V2: Must not be provided. S: Must not be provided, except for returns (Category Purpose Code: RRCT).	CH17, CH21
Credit Transfer Transaction Information +Creditor Account ++Identification +++Other ++++Identification	Id	1..1	M	Must be used if "Other" is used. For returns (Category Purpose Code: RRCT), the Account Servicer Reference of the credit must be specified here.	D: V2: Must not be provided	AC01
Credit Transfer Transaction Information +Creditor Account ++Proxy	Prxy	0..1	O	May be supplied in addition to «Id».	D: V2: Must not be provided. S: May only be delivered by agreement with the financial institution. The specific rules for attribute AT-E003 must be observed.	
Credit Transfer Transaction Information +Creditor Account ++Proxy +++Type	Tp	0..1	O		X: Must be used.	
Credit Transfer Transaction Information +Ultimate Creditor	UltmtCdtr	0..1	D	Ultimate creditor In this element, the creditor and/or the debtor can further specify the ultimate creditor, for their own purposes. The data is simply forwarded by the financial institutions (where technically possible).		
Credit Transfer Transaction Information +Ultimate Creditor ++Name	Nm	0..1	O	Must be used if Postal Address is used.	S: max. 70 characters	CH16

ISO-20022-Standard			Swiss Payment Standards			
Message Item	XML Tag	Mult	St.	General Definition	Payment Type-Specific Definition	Error
Credit Transfer Transaction Information +Ultimate Creditor ++Postal Address	PstAdr	0..1	D	For a general description of the sub-elements, see chapter 3.11 "Using address information"	S: Not forwarded in interbank traffic.	CH17
Credit Transfer Transaction Information +Ultimate Creditor ++Postal Address +++Town Name	TwnNm	0..1	R	Must be used		CH21
Credit Transfer Transaction Information +Ultimate Creditor ++Postal Address +++Country	Ctry	0..1	R	Must be used		BE09
Credit Transfer Transaction Information +Ultimate Creditor ++Postal Address +++Address Line	AdrLine	0..7	BD	Maximum of 2 lines allowed if offered as part of the hybrid address.		CH17
Credit Transfer Transaction Information +Ultimate Creditor ++Identification	Id	0..1	D		C: Must not be provided.	CH17
Credit Transfer Transaction Information +Ultimate Creditor ++Identification +++Organisation Identification	OrgId {Or	1..1	D	Only "AnyBIC" or an element from "Other" and optionally additionally the element "LEI" are allowed.	D: All information will be forwarded. S: If several elements are delivered, only one of the elements is forwarded with the following priority: 1. prio AnyBIC, 2. prio LEI, 3. prio Other X: If name/address and AnyBIC are used at the same time, only AnyBIC will be forwarded.	CH16, CH17, CH21
Credit Transfer Transaction Information +Ultimate Creditor ++Identification +++Organisation Identification ++++Any BIC	AnyBIC	0..1	O			
Credit Transfer Transaction Information +Ultimate Creditor ++Identification +++Organisation Identification ++++LEI	LEI	0..1	O	The forwarding of the element cannot be guaranteed in all cases. May be supplied in addition to "AnyBIC" or "Othr".		

ISO-20022-Standard			Swiss Payment Standards			
Message Item	XML Tag	Mult	St.	General Definition	Payment Type-Specific Definition	Error
Credit Transfer Transaction Information +Ultimate Creditor ++Identification +++Organisation Identification ++++Other	Othr	0..n	O			
Credit Transfer Transaction Information +Ultimate Creditor ++Identification +++Private Identification	PrvtId Or}	1..1	D	Either the element "Date And Place Of Birth" or an element from "Other" may be used.		CH16, CH17
Credit Transfer Transaction Information +Instruction For Creditor Agent	InstrForCdtrAgt	0..n	BD	The element is processed according to the rules of the financial institution.	D: Must not be provided. S: Must not be provided. C: Must not be provided.	CH16, CH17
Credit Transfer Transaction Information +Instruction For Creditor Agent ++Code	Cd	0..1	D			
Credit Transfer Transaction Information +Instruction For Creditor Agent ++Instruction Information	InstrInf	0..1	D			
Credit Transfer Transaction Information +Instruction For Debtor Agent	InstrForDbtrAgt	0..1	BD	The element is processed pursuant to the rules of the financial institution.	D: V2: Must not be provided. S: Must not be delivered.	CH17
Credit Transfer Transaction Information +Purpose	Purp	0..1	O			
Credit Transfer Transaction Information +Purpose ++Code	Cd	1..1	M	Codes pursuant to the "Payments External Code Lists" [8]. Must be used if "Purpose" is used.		
Credit Transfer Transaction Information +Regulatory Reporting	RgltryRptg	0..10	O	Forwarded abroad only in interbank transactions. Required for payments to certain countries (e.g. United Arab Emirates). Only one occurrence is allowed. If more information is made available, it will be ignored by the financial institutions.	D: V2: Must not be provided.	CH21

ISO-20022-Standard			Swiss Payment Standards			
Message Item	XML Tag	Mult	St.	General Definition	Payment Type-Specific Definition	Error
Credit Transfer Transaction Information +Regulatory Reporting ++Debit Credit Reporting Indicator	DbtCdtRptgInd	0..1	O	Defines whether the information concerns the ordering party, the beneficiary or both. The use of this field must be clarified with the respective financial institution. The element is mandatory for the United Arab Emirates. Permitted codes are • CRED (corresponds to BENEFRES in Swift Field 77B), • DEBT (corresponds to ORDERRES in Swift Field 77B), • BOTH		
Credit Transfer Transaction Information +Regulatory Reporting ++Authority	Authrty	0..1	O	Information about the competent regulatory authority (central bank)		
Credit Transfer Transaction Information +Regulatory Reporting ++Authority +++Name	Nm	0..1	O	Name of the competent regulatory authority (central bank)		
Credit Transfer Transaction Information +Regulatory Reporting ++Authority +++Country	Ctry	0..1	O	Country of the competent regulatory authority (central bank)		BE09
Credit Transfer Transaction Information +Regulatory Reporting ++Details	Dtls	0..n	M	Must be sent if "Regulatory Reporting" is used. May be used only once.		CH21
Credit Transfer Transaction Information +Regulatory Reporting ++Details +++Type	Tp	0..1	O			
Credit Transfer Transaction Information +Regulatory Reporting ++Details +++Date	Dt	0..1	O			
Credit Transfer Transaction Information +Regulatory Reporting ++Details +++Country	Ctry	0..1	D	Country for which the indication of the regulatory information is intended (usually the country of the regulatory authority). If <Ctry> is used, either the element "Cd" or "Inf" must also be present.		BE09, CH21

ISO-20022-Standard			Swiss Payment Standards			
Message Item	XML Tag	Mult	St.	General Definition	Payment Type-Specific Definition	Error
Credit Transfer Transaction Information +Regulatory Reporting ++Details +++Code	Cd	0..1	D	Reporting code as defined by the relevant regulatory authority (central bank). Provides information about the nature or purpose of the payment. May be used only together with the field <Ctry>.		RR05, CH21
Credit Transfer Transaction Information +Regulatory Reporting ++Details +++Amount	Amt	0..1	O			
Credit Transfer Transaction Information +Regulatory Reporting ++Details +++Information	Inf	0..n	O	May be used only twice. If more information is made available, it will be ignored by the financial institutions. Use of this field must be agreed with the respective financial institution.		CH17
Credit Transfer Transaction Information +Related Remittance Information	RltdRmtInf	0..10	D	The element is processed pursuant to the rules of the financial institution. Must not be supplied together with the element <RmtInf>.	D: V2: Must not be provided. S: Not forwarded in interbank traffic.	
Credit Transfer Transaction Information +Remittance Information	RmtInf	0..1	O	Either structured or unstructured.		
Credit Transfer Transaction Information +Remittance Information ++Unstructured	Ustrd	0..n	D	Only one occurrence is allowed, maximum 140 characters.	D: This element must not be supplied in combination with a QR-IBAN (CH/LI) S: For payment orders in connection with sales transactions to end-users, the regulation in accordance with the current EPC Guidance Document <i>Improve Transparency for Retail Payment End-Users</i> must be observed.	CH17
Credit Transfer Transaction Information +Remittance Information ++Structured	Strd	0..n	D	Only one occurrence is allowed. Complete forwarding of the element cannot be guaranteed. If the element cannot be fully forwarded, the forwarding of the sub-element <CdtRefInf> is prioritised. The number of all characters supplied within the element <Strd> must not exceed 9000 characters (excluding sub-element tags).	D: This element must be used in combination with a QR-IBAN (CH/LI). S: May contain a maximum of 140 characters within the element including the XML tags of the sub-elements.	CH17, CH15, CH21, RR07
Credit Transfer Transaction Information +Remittance Information ++Structured +++Referred Document Information	RfrdDocInf	0..n	O		S: Must not be provided.	CH17

ISO-20022-Standard			Swiss Payment Standards			
Message Item	XML Tag	Mult	St.	General Definition	Payment Type-Specific Definition	Error
Credit Transfer Transaction Information +Remittance Information ++Structured +++Referred Document Amount	RfrdDocAmt	0..1	O		S: Must not be provided.	CH17
Credit Transfer Transaction Information +Remittance Information ++Structured +++Creditor Reference Information	CdtrRefInf	0..1	O	Creditor Reference Information	D: This element must be used in combination with a QR-IBAN (CH/LI).	CH21, CH16
Credit Transfer Transaction Information +Remittance Information ++Structured +++Creditor Reference Information ++++Type	Tp	0..1	D	Reference Type	D: Must be used when "Creditor Reference Information" is used. S: Must be used when "Creditor Reference Information" is used. X: Must be used when "Creditor Reference Information" is used.	CH21
Credit Transfer Transaction Information +Remittance Information ++Structured +++Creditor Reference Information ++++Type +++++Code Or Proprietary	CdOrPrtry	1..1	M	Must be used if "Type" is used.		CH21
Credit Transfer Transaction Information +Remittance Information ++Structured +++Creditor Reference Information ++++Type +++++Code Or Proprietary +++++Code	Cd {Or	1..1	D	Reference Type (Code) Must be used if an "ISO Creditor Reference" in accordance with ISO 11649 is used in the element <Ref>. Only the code "SCOR" is allowed.	D: Must not be used together with a QR IBAN in The element "Creditor Account/IBAN"	CH16
Credit Transfer Transaction Information +Remittance Information ++Structured +++Creditor Reference Information ++++Type +++++Code Or Proprietary +++++Proprietary	Prtry Or}	1..1	D	Reference Type (Proprietary) The following code values are permitted: • QRR = QR reference (in association with QR-bill) If used, then "Code" must not be present.	D: For specifying the structured QR reference of the QR bill, this element must contain the QRR and may only be used in combination with a QR IBAN in the element "Creditor Account/IBAN". S: Must not be used.	CH17, CH16

ISO-20022-Standard			Swiss Payment Standards			
Message Item	XML Tag	Mult	St.	General Definition	Payment Type-Specific Definition	Error
Credit Transfer Transaction Information +Remittance Information ++Structured +++Creditor Reference Information ++++Type +++++Issuer	Issr	0..1	O	If the value "ISO" is supplied in this element and the value "SCOR" in the element <Cd>, then the element <Ref> must contain a formally correct "Creditor Reference" in accordance with ISO 11649.	D: Independent of whether the element <Issr> is provided, the reference is validated according to ISO 11649. X: Only if the element <Issr>="ISO" is provided will the reference be validated according to ISO 11649. S: Only if the element <Issr>="ISO" is provided will the reference be validated according to ISO 11649.	CH16
Credit Transfer Transaction Information +Remittance Information ++Structured +++Creditor Reference Information +++Reference	Ref	0..1	D	Must be used if "Creditor Reference Information" is used	D: Must include "Creditor Reference" according to ISO 11649 or QR reference. S: Must contain "Creditor Reference" according to ISO 11649 if the value "ISO" is supplied in the "Issuer" element. X: Must contain "Creditor Reference" according to ISO 11649 if the value "ISO" is supplied in the "Issuer" element.	CH16
Credit Transfer Transaction Information +Remittance Information ++Structured +++Invoicer	Invcr	0..1	O		D: V2: Must not be provided. S: Must not be provided.	CH17
Credit Transfer Transaction Information +Remittance Information ++Structured +++Invoicee	Invcee	0..1	O		D: V2: Must not be provided. S: Must not be provided.	CH17
Credit Transfer Transaction Information +Remittance Information ++Structured +++Tax Remittance	TaxRmt	0..1	O		S: Must not be provided. D: Not currently used in CH/LI	CH17
Credit Transfer Transaction Information +Remittance Information ++Structured +++Garnishment Remittance	GrnshmtRmt	0..1	O		S: Must not be provided. D: Not currently used in CH/LI	CH17

ISO-20022-Standard			Swiss Payment Standards			
Message Item	XML Tag	Mult	St.	General Definition	Payment Type-Specific Definition	Error
Credit Transfer Transaction Information +Remittance Information ++Structured +++Additional Remittance Information	AddtlRmtInf	0..3	O	May only be used as a supplement to other sub-elements of the structured message/remittance.	D: May only occur once. S: Must not be provided. C: Must not be provided.	CH17, CH21

Table 16: Credit transfer transaction information (CdtTrfTxInf, C level)

5 Examples of payment instructions as "pain.001" messages

5.1 Business case for QR-Bill with QR reference and SCOR reference

The following assumptions were made for specifying this example in XML:

The debtor "Example Company, Seldwyla, CH" creates a "pain.001" message as of 15.02.2023 with two payment groups. Payment group 1 contains a transaction as of 22.02.2023 from a QR-bill with a QR-IBAN and QR reference.

Payment group 2 contains a transaction as of 18.02.2023 from a QR-bill with an IBAN and SCOR reference.

XML expressions of the example, see Annex A.

5.1.1 Example data

Payment group 1 containing a transaction from a QR-bill with a QR-IBAN and QR reference

Field name	Contents
Identification of the group	PMTINF-01
Preferred execution date	22.02.2023
Name/address of the debtor	EXAMPLE LTD, SELDWYLA, CH
Customer IBAN	CH72 8000 5000 0888 7776 6
Debtor bank BIC	RAIFCH22005

Table 17: Data of payment group 1

Field name	Contents
Transaction reference	INSTRID-01-01
"End To End Identification"	ENDTOENDID-QRR
Currency/amount	CHF 3949.75
Name/address of the creditor	Robert Scheider Ltd Rue du Lac 1268 2501 Biel
Creditor IBAN	CH44 3199 9123 0008 8901 2
Reference type (proprietary)	QRR
Details of payment (structured)	210000000003139471430009017
Additional information	Order from 10.02.2023

Table 18: Transaction data

Payment group 2 containing a transaction from a QR-bill with an IBAN and SCOR reference

Field name	Contents
Identification of the group	PMTINF-02
Preferred execution date	18.02.2023
Name/address of the debtor	EXAMPLE LTD, SELDWYLA, CH
Customer IBAN	CH72 8000 5000 0888 7776 6
Debtor bank BIC	RAIFCH22005

Table 19: Data of payment group 2

Field name	Contents
Transaction reference	INSTRID-02-01
"End To End Identification"	ENDTOENDID-SCOR
Currency/amount	EUR 199.95
Name/address of the creditor	Peter Haller Rosenauweg 4 CH-8036 Zurich
Creditor IBAN	CH48 2196 6000 0096 1338 8
Reference type (code)	SCOR
Issuer	ISO
Details of payment (structured)	RF18539007547034

Table 20: Transaction data

5.2 Business case for foreign currency payment (domestic) and SEPA

The following assumptions were made for specifying this example in XML:

The debtor "Example Company, Seldwyla, CH" creates a "pain.001" message as of 15.02.2023 with two payment groups.

Payment group 1 contains a single foreign currency transaction as of 22.02.2023.

Payment group 2 contains two transactions as of 18.02.2023, one SEPA payment with and one without BIC.

XML expressions of the example, see Annex A.

5.2.1 Example data

Payment group 1 with one foreign currency payment (domestic)

Field name	Contents
Identification of the group	PMTINF-01
Preferred execution date	22.02.2023
Name/address of the debtor	EXAMPLE LTD, SELDWYLA, CH
Customer IBAN	CH72 8000 5000 0888 7776 6
Debtor bank BIC	RAIFCH22005

Table 21: Data of payment group 1

Field name	Contents
Transaction reference	INSTRID-01-01
"End To End Identification"	ENDTOENDID-001
Currency/amount	USD 3949.75
Name/Address of the creditor	Peter Haller Rosenauweg 4 CH-8036 Zurich
Creditor IBAN	CH50 2197 7000 0043 3134 6
Reference type (code)	SCOR
Details of payment (structured)	RF4220210323103704APG0018

Table 22: Transaction data

Payment group 2 with 2 SEPA payments

Field name	Contents
Identification of the group	PMTINF-02
Preferred execution date	18.02.2022
Service level	SEPA
Name/address of the debtor	EXAMPLE LTD, SELDWYLA, CH
Customer IBAN	CH72 8000 5000 0888 7776 6
Debtor bank BIC	RAIFCH22005

Table 23: *Data of payment group 2*

Field name	Contents
Transaction reference	INSTRID-02-01
"End To End Identification"	ENDTOENDID-002
Currency/amount	EUR 8479.25
Name/address of the creditor	Robert Scheider SA Rue de la gare 24 2501 Biel
Creditor IBAN	CH42 2198 8000 0095 2286 5
Details of payment (unstructured)	Invoice no. 408

Table 24: *Data of the first transaction of this payment group*

Field name	Contents
Transaction reference	INSTRID-02-02
"End To End Identification"	ENDTOENDID-003
Currency/amount	EUR 3421.00
Name/address of the creditor	Peter Haller Rosenauweg 4 CH-8036 Zurich
Creditor IBAN	DE62 0076 2011 0623 8529 57
Reference type (code)	SCOR
Issuer	ISO
Details of payment (structured)	RF712348231
Creditor bank BIC	UBSWDEFF

Table 25: *Data of the second transaction of this payment group*

Annex A: XML schema

XML schema

The SPS XML schema

- ***[pain.001.001.09.ch.03.xsd](#)***

is published on the website www.iso-payments.ch.

It is best to open it with software specifically written for XML content.

Annex B: Mapping the Swiss QR code in a QR-bill payment part into "pain.001"

QR element	Element name	St.	General definition	Element pain.001
QRCH +Header	Header		Header Header Data. Contains basic information about the Swiss QR Code	N/A
QRCH +Header ++QRType	QRType	M	QR type Unambiguous indicator for the Swiss QR Code. Fixed value SPC (Swiss Payments Code)	N/A
QRCH +Header ++Version	Version	M	Version Contains version of the specifications (Implementation Guidelines) in use on the date on which the Swiss QR Code was created. The first two positions indicate the main version, the following two positions the sub-version. Fixed value of "0200" for Version 2.0	N/A
QRCH +Header ++Coding	Coding	M	Coding type Character set code. Fixed value 1 (indicates UTF-8 restricted to the Latin character set)	N/A
QRCH +CdtrInf	CdtrInf		Creditor information <i>Account / Payable to</i>	N/A
QRCH +CdtrInf ++IBAN	IBAN	M	IBAN IBAN or QR-IBAN of the creditor.	Creditor Account – IBAN
QRCH +CdtrInf ++Cdtr	Cdtr		Creditor	N/A
QRCH +CdtrInf ++Cdtr +++AdrTp	AdrTp	M	Address type The address type is specified using a code. The following codes are defined: S = structured address K = combined address elements (2 lines)	N/A
QRCH +CdtrInf ++Cdtr +++Name	Name	M	Name The creditor's name or company pursuant to the account name. Comment: always matches the account holder	Creditor – Name
QRCH +CdtrInf ++Cdtr +++StrtNmOr AdrLine1	StrtNmOr AdrLine1	O	Street or address line 1 Structured Address: Street/P.O. Box of the creditor's address Combined address elements: Address line 1 including street and building number or P.O. Box	If AdrTp = S: Creditor – Street Name
QRCH +CdtrInf ++Cdtr +++BldgNbOr AdrLine2	BldgNbOr AdrLine2	O	Building number or address line 2 Structured Address: Building number of creditor's address Combined address elements: Address line 2 including postal code and town of creditor's address	If AdrTp = S: Creditor – Building Number

QR element	Element name	St.	General definition	Element pain.001
QRCH +CdtrInf ++Cdtr +++PstCd	PstCd	M (D ¹)	Postal code Post code of creditor's address	Creditor – Post Code
QRCH +CdtrInf ++Cdtr +++TwnNm	TwnNm	M (D ²)	Town Town of creditor's address	Creditor – Town Name
QRCH +CdtrInf ++Cdtr +++Ctry	Ctry	M	Country Country of creditor's address	Creditor – Country
QRCH +CcyAmt	CcyAmt		Payment amount information	N/A
QRCH +CcyAmt ++Amt	Amt	O	Amount The payment amount	Instructed Amount
QRCH +CcyAmtDate ++Ccy	Ccy	M	Currency The payment currency, 3-digit alphanumeric currency code in accordance with ISO 4217	Instructed Amount
QRCH +UltmtDbtr	UltmtDbtr		Ultimate debtor <i>Payable by</i>	N/A
QRCH +UltmtDbtr ++AdrTp	AdrTp	D	Address type The address type is specified using a code. The following codes are defined: S = structured address K = combined address elements (2 lines)	N/A
QRCH +UltmtDbtr ++Name	Name	D	Name The ultimate debtor's name or company	Ultimate Debtor – Name
QRCH +UltmtDbtr ++StrtNmOr AdrLine1	StrtNmOr AdrLine1	O	Street or address line 1 Structured Address: Street/P.O. Box of ultimate debtor's address Combined address elements: Address line 1 including street and building number or P.O. Box	If AdrTp = S: Ultimate Debtor – Street Name
QRCH +UltmtDbtr ++BldgNbOr AdrLine2	BldgNbOr AdrLine2	O	Building number or address line 2 Structured Address: Building number of ultimate debtor's address Combined address elements: Address line 2 including postal code and town of ultimate debtor's address	If AdrTp = S: Ultimate Debtor – Building Number
QRCH +UltmtDbtr ++PstCd	PstCd	D	Postal code Post code of ultimate debtor's address	Ultimate Debtor – Post Code
QRCH +UltmtDbtr ++TwnNm	TwnNm	D	Town Town of ultimate debtor's address	Ultimate Debtor – Town Name
QRCH +UltmtDbtr ++Ctry	Ctry	D	Country Country of ultimate debtor's address	Ultimate Debtor – Country

¹ As only the structured address can be used, this is a mandatory field (M).

² As only the structured address can be used, this is a mandatory field (M).

QR element	Element name	St.	General definition	Element pain.001
QRCH +RmtInf	RmtInf		Payment reference	N/A
QRCH +RmtInf ++Tp	Tp	M	Reference type Reference type (QR, ISO) The following codes are permitted: QRR – QR reference SCOR – Creditor Reference (ISO 11649) NON – without reference	Credit Transfer Transaction Information +Remittance Information See the following detailed description about Remittance Information.
QRCH +RmtInf ++Ref	Ref	D	Reference Note: The structured reference is either a QR reference or an ISO 11649 Creditor Reference	Remittance Information – Reference See the following detailed description about Remittance Information.
QRCH +RmtInf ++AddInf	AddInf		Additional information Additional information can be used for the scheme with message and for the scheme with structured reference.	N/A
QRCH +RmtInf ++AddInf +++Ustrd	Ustrd	O	Unstructured message Unstructured information can be used to indicate the payment purpose or for additional textual information about payments with a structured reference.	Procedure with notification: Remittance Information – unstructured Procedure with structured reference for additional information: AddtlRmtInf
QRCH +RmtInf ++AddInf +++Trailer	Trailer	M	Trailer Unambiguous indicator for the end of payment data. Fixed value "EPD" (End Payment Data).	N/A
QRCH +RmtInf ++AddInf +++StrdBkgInf	StrdBkgInf	O	Bill information Bill information contain coded information for automated booking of the payment. The data is not forwarded with the payment.	N/A
QRCH +AltPmtInf	AltPmtInf		Alternative schemes Parameters and data of other supported schemes.	N/A
QRCH +AltPmtInf ++AltPmt	AltPmt	A	Alternative scheme parameters Parameter character chain of the alternative scheme pursuant to the syntax definition in the section "Alternative scheme".	N/A

Table 26: Mapping the Swiss QR Code in a QR-bill payment part into "pain.001"

Note: In the Implementation Guideline QR-bill, the

- status Value X is defined as follows: "Do not fill. Field must not be filled in but must be sent (intended 'for future use', so the field separator needs to be sent)".
- Status Value A is defined as follows: "Additional. Field does not necessarily need to be delivered".

Detailed description of structured and unstructured remittance information

QR-Code			pain.001	
QRCH +RmtInf ++Ref	QRCH +RmtInf ++AddInf +++Ustrd	QRCH +RmtInf ++Tp	Remittance Information	Remittance Information/Type
Filled in	Not filled in	QRR or SCOR	Reference	Element Prtry QRR or Element Code SCOR
Filled in	Filled in	QRR or SCOR	Reference	Element Prtry QRR or Element Code SCOR
			AddtlRmtInf	N/A
Not filled in	Filled in	NON	Remittance Information – unstructured	N/A
Not filled in	Not filled in	NON	N/A	N/A

Table 27: Detailed description of structured and unstructured remittance information