



# SwissAtMid

## Monthly Execution Report, November 2017

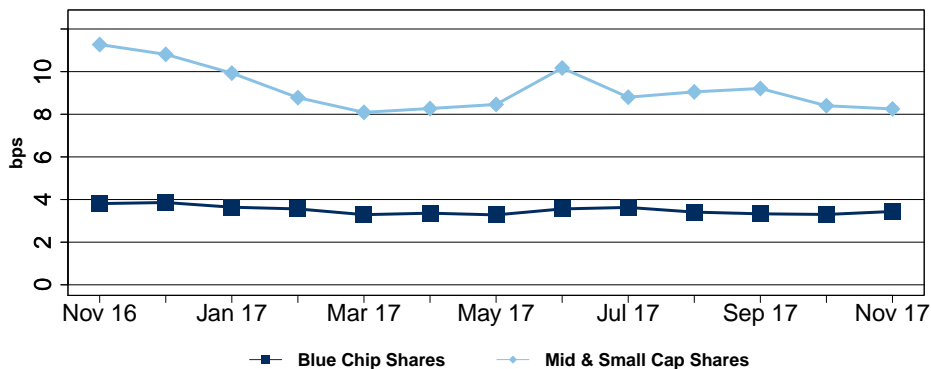
Trading and Performance Statistics:	
Value executed:	CHF 524.8 mn
Number of trades:	32,936
Average trade size:	CHF 15,934
Value of price improvement:	CHF 199,545

Top Instrument by % Daily Turnover	Ratio (in %)	Date
ENERGIEDIENS... (EDHN)	52.08	14.11.17
BELIMO N (BEAN)	29.49	29.11.17
PEACH PROPER... (PEAN)	24.75	08.11.17
ORIOR N (ORON)	23.33	28.11.17
GAM N (GAM)	19.14	03.11.17

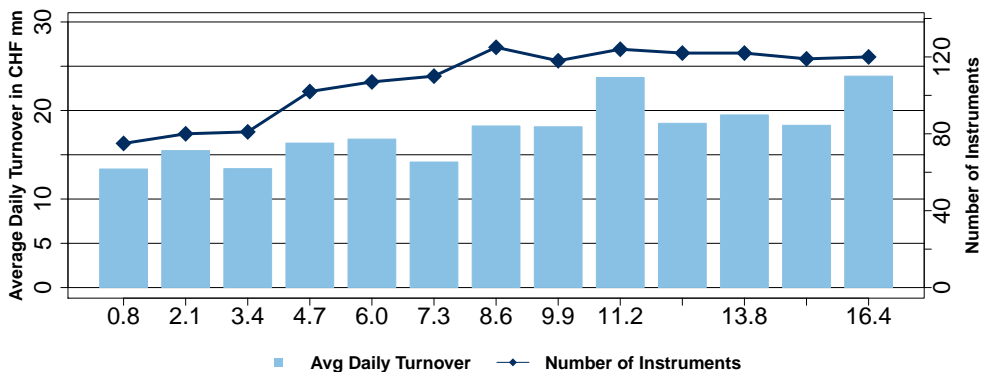
Top Blue Chip Instrument by Value	Turnover (in CHF mn)	Trades
NESTLE N (NESN)	69.92	4,415
NOVARTIS N (NOVN)	41.95	2,422
LAFARGEHOLCI... (LHN)	41.92	3,183
SWISS RE N (SREN)	39.28	2,334
GEBERIT N (GEBN)	35.12	1,364

Top Mid and Small Cap Instrument by Value	Turnover (in CHF mn)	Trades
AMS (AMS)	9.75	633
VALORA N (VALN)	2.99	311
BARRY CALLEB... (BARN)	2.69	156
VAT GROUP N (VACN)	2.67	156
TEMENOS N (TEMN)	2.54	157

Minimum Average Price Improvement



Quarterly Stock Coverage and Average Daily Turnover



SIX Swiss Exchange Ltd  
 Pfingstweidstrasse 110  
 P.O. Box  
 8021 Zurich

Equity Sales & Management  
 Zurich T +41 58 399 4047  
 London T +44 20 7074 4434  
[equity.products@six-swiss-exchange.com](mailto:equity.products@six-swiss-exchange.com)