



# SwissAtMid

## Monthly Execution Report, December 2017

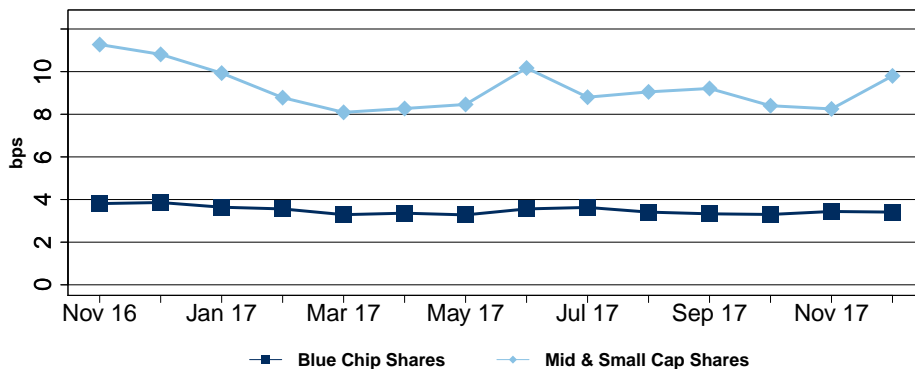
Trading and Performance Statistics:	
Value executed:	CHF 410.44 mn
Number of trades:	23,967
Average trade size:	CHF 17,125
Value of price improvement:	CHF 169,133

Top Instrument by % Daily Turnover	Ratio (in %)	Date
JUNGFRAUBAHN... (JFN)	28.03	08.12.17
BEKB / BCBE ... (BEKN)	16.65	05.12.17
AMS (AMS)	13.97	22.12.17
RIETER N (RIEN)	13.32	06.12.17
LUZERNER KB ... (LUKN)	12.91	11.12.17

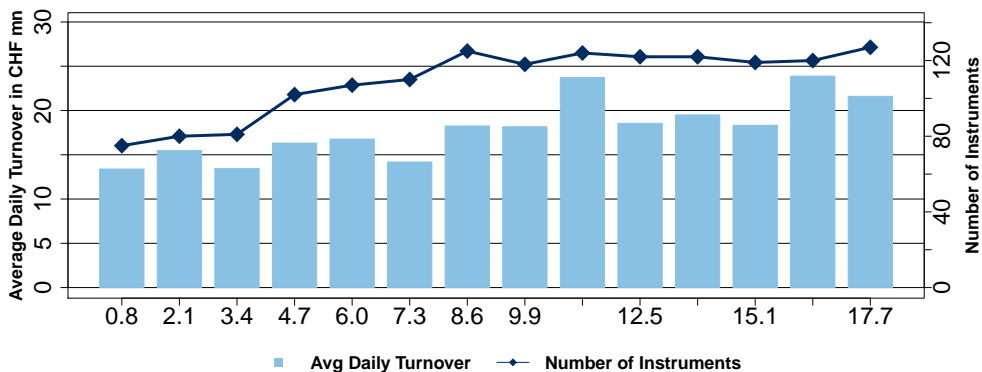
Top Blue Chip Instrument by Value	Turnover (in CHF mn)	Trades
LAFARGEHOLCI... (LHN)	50.84	1,780
NESTLE N (NESN)	43.91	2,637
NOVARTIS N (NOVN)	31.74	1,967
UBS GROUP N (UBSG)	24.83	1,113
CS GROUP N (CSGN)	21.18	1,071

Top Mid and Small Cap Instrument by Value	Turnover (in CHF mn)	Trades
AMS (AMS)	14.76	768
TEMENOS N (TEMN)	4.48	292
BARRY CALLEB... (BARN)	4.37	292
VAT GROUP N (VACN)	3.05	149
FLUGHAFEN ZU... (FHZN)	3.03	200

Minimum Average Price Improvement



Quarterly Stock Coverage and Average Daily Turnover



SIX Swiss Exchange Ltd  
 Pfingstweidstrasse 110  
 P.O. Box  
 8021 Zurich

Equity Sales & Management  
 Zurich T +41 58 399 4047  
 London T +44 20 7074 4434  
[equity.products@six-swiss-exchange.com](mailto:equity.products@six-swiss-exchange.com)