

## SIX Ethical Sweden Index

Reflects the market performance of companies that fulfill the ethical requirements.

The SIX Ethical Sweden Index reflects the performance of the Stockholm Stock Exchange, excluding companies that are considered unethical by Ethix SRI Advisors.



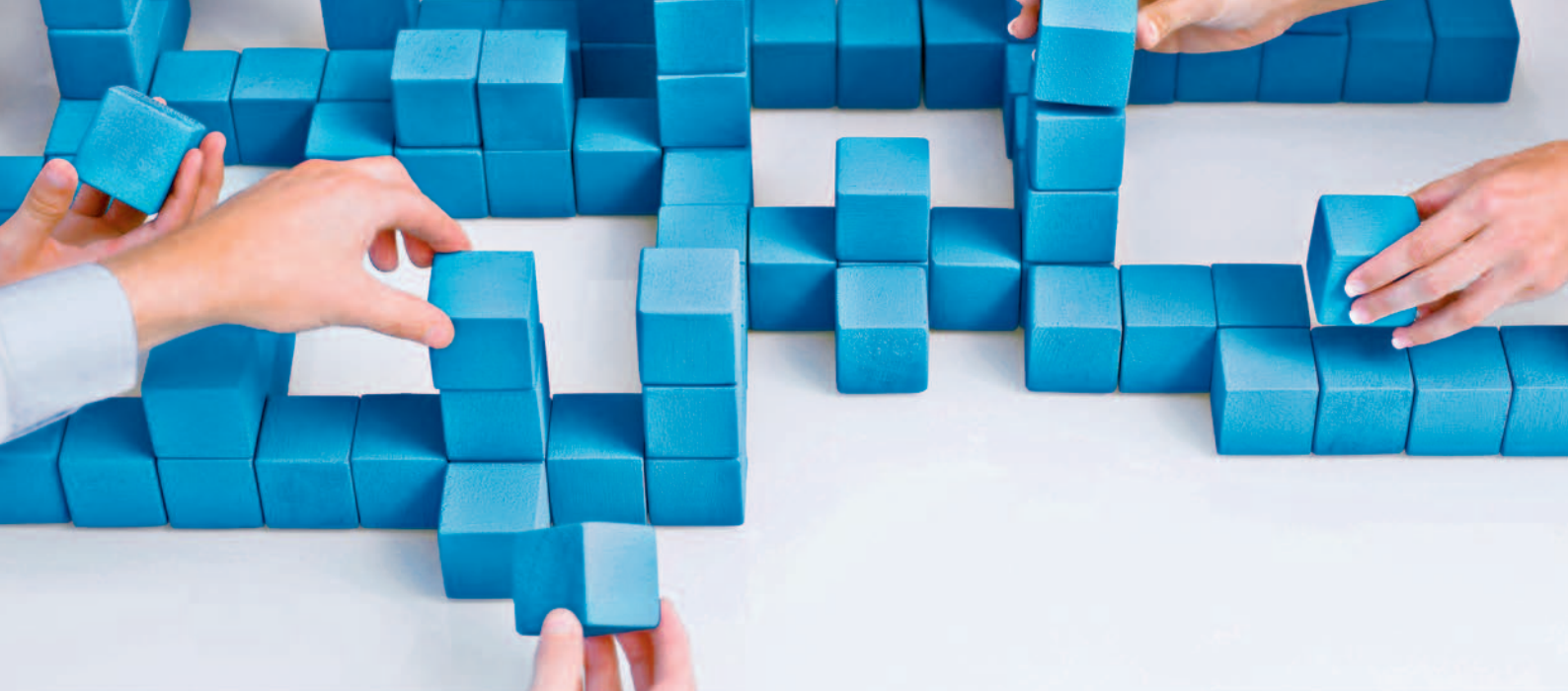
The SIX Ethical Sweden Index (SIXETHICALSEGI) is owned and calculated by SIX Financial Information in cooperation with Ethix SRI Advisors. The SIX Ethical Sweden Index reflects the market performance of companies listed on the Stockholm Stock Exchange that fulfill the ethical requirements set by Ethix. The Index is a capital weighted index which aims to reflect the market performance from a fund management perspective.

### Selection process

SIX Ethical Sweden Index is based on the companies that are listed on the Stockholm Stock Exchange. Revision takes place semiannually, where the constituent companies are screened in accordance with Ethix SRI Advisor's ethical criteria. Companies that derive any turnover from pornography or more than 5% of turnover from alcohol, gambling, tobacco or military are excluded and the remaining companies constitute the SIX Ethical Sweden Index population.

### SIX Ethical Sweden Index





### SIX Ethical Sweden Index

Period	Value	Change	Change %
1 Week	169,70	1,64	0,97
1 Month	166,88	4,46	2,67
3 Months	172,84	-1,50	-0,87
6 Months	159,60	11,74	7,36
1 Year	143,83	27,51	19,13
Year to date 2014-09-03	155,19	16,15	10,41

### Index information

Type of Index Market index	Currency SEK
Market Sweden	Frequency of calculations End of day
Base date 2007-12-28	Rebalancing Companies included when listed
Base value 100	Distribution SIX Financial Information
Weighting Capital weighted	Rules & regulations <a href="http://www.six.se/six-index">www.six.se/six-index</a>
No. of constituents Approx. 240	
Index Variations Price index Gross index Net index	

For more information, please contact the SIX Financial Information Index team and a representative will be happy to assist you.

**Harry Matilainen**  
Senior Index Analyst  
+46 8-58 61 6391  
[harry.matilainen@six-group.se](mailto:harry.matilainen@six-group.se)

**Mikael Petersson**  
Senior Index Analyst  
+46 8-58 61 6392  
[mikael.petersson@six-group.se](mailto:mikael.petersson@six-group.se)

**Mårten Eriksson**  
Index Analyst  
+46 8-58 61 6393  
[marten.eriksson@six-group.se](mailto:marten.eriksson@six-group.se)

[sixindex@six-financial-information.se](mailto:sixindex@six-financial-information.se)

**SIX Financial Information**  
Hardturmstrasse 201  
P.O. Box  
CH - 8021 Zurich  
T +41 58 399 5111

Canada +1 416 915 4121  
Denmark +45 33 411 111  
Finland +358 207 334 043  
Hong Kong +852 2971 0388  
Ireland +353 1 213 0722

Japan +81 3 3808 2271  
Luxembourg +352 261 161  
Norway +47 23 326 620  
Singapore +65 6338 3808  
Sweden +46 8 5861 6300

UK +44 20 7550 5000  
USA +1 203 353 8100

[sales.global@six-financial-information.com](mailto:sales.global@six-financial-information.com)  
[www.six-financial-information.com](http://www.six-financial-information.com)